

Datasheet for ABIN953686
anti-Neuroserpin antibody (N-Term)

3 Images

[Go to Product page](#)

Overview

Quantity:	0.4 mL
Target:	Neuroserpin (SERPINI1)
Binding Specificity:	AA 26-53, N-Term
Reactivity:	Human
Host:	Rabbit
Clonality:	Polyclonal
Application:	Western Blotting (WB), Immunofluorescence (IF), Immunohistochemistry (Paraffin-embedded Sections) (IHC (p)), Enzyme Immunoassay (EIA)

Product Details

Immunogen:	KLH conjugated synthetic peptide between 26-53 amino acids from the N-terminal region of Human SERPINI1. Genename: SERPINI1
Isotype:	Ig Fraction
Specificity:	Recognizes SERPINI1 (N-term).
Purification:	Protein A column followed by peptide Affinity purification

Target Details

Target:	Neuroserpin (SERPINI1)
Alternative Name:	Neuroserpin / SERPINI1 (SERPINI1 Products)
Background:	This gene encodes a member of the serpin superfamily of serine proteinase inhibitors. The protein is primarily secreted by axons in the brain, and preferentially reacts with and inhibits

Target Details

tissue-type plasminogen activator. It is thought to play a role in the regulation of axonal growth and the development of synaptic plasticity. Mutations in this gene result in familial encephalopathy with neuroserpin inclusion bodies (FENIB), which is a dominantly inherited form of familial encephalopathy and epilepsy characterized by the accumulation of mutant neuroserpin polymers. Multiple alternatively spliced variants, encoding the same protein, have been identified. Synonyms: PI-12, PI12, Peptidase inhibitor 12, Serpin I1

Gene ID: 5274

NCBI Accession: [NP_001116224](#)

Pathways: [Regulation of Hormone Metabolic Process](#)

Application Details

Application Notes: Optimal working dilution should be determined by the investigator.

Restrictions: For Research Use only

Handling

Format: Liquid

Concentration: 0.25 mg/mL

Buffer: PBS with 0.09 % (W/V) Sodium Azide as preservative

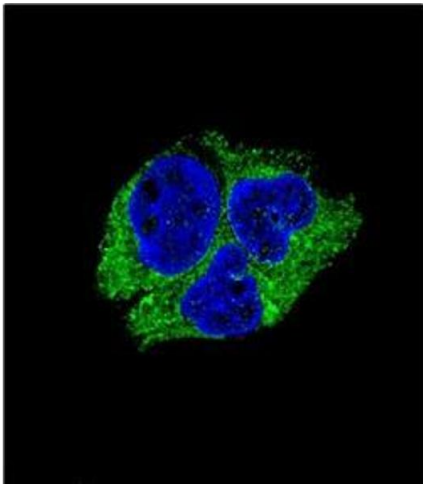
Preservative: Sodium azide

Precaution of Use: This product contains sodium azide: a POISONOUS AND HAZARDOUS SUBSTANCE which should be handled by trained staff only.

Handling Advice: Avoid repeated freezing and thawing.

Storage: 4 °C/-20 °C

Storage Comment: Store the antibody undiluted at 2-8 °C for one month or (in aliquots) at -20 °C for longer.



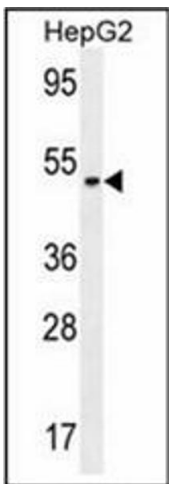
Immunofluorescence

Image 1. Confocal Immunofluorescent analysis of SERPINI1 Antibody (N-term)Cat.-No AP53865PU-N with HepG2 cell followed by Alexa Fluor® 488-conjugated Goat anti-Rabbit IgG (green). DAPI was used to stain the cell nuclear (blue).



Immunohistochemistry (Paraffin-embedded Sections)

Image 2. Immunohistochemistry analysis in Formalin Fixed, Paraffin Embedded Human brain tissue stained with SERPINI1 antibody (N-term) followed by peroxidase conjugation of the secondary antibody and DAB staining. This data demonstrates the use of the SERPINI1 antibody (N-term) for immunohistochemistry. Clinical relevance has not been evaluated.



Western Blotting

Image 3. Western blot analysis using SERPINI1 Antibody (N-term) Cat.-No AP53865PU-N in HepG2 cell line lysates (35ug/lane). This demonstrates the SERPINI1 antibody detected the SERPINI1 protein (arrow).