

Datasheet for ABIN953695
anti-NFKBIL1 antibody (Middle Region)



[Go to Product page](#)

3 Images

Overview

Quantity:	0.4 mL
Target:	NFKBIL1
Binding Specificity:	AA 256-289, Middle Region
Reactivity:	Human
Host:	Rabbit
Clonality:	Polyclonal
Conjugate:	This NFKBIL1 antibody is un-conjugated
Application:	Western Blotting (WB), Immunofluorescence (IF), Flow Cytometry (FACS), Enzyme Immunoassay (EIA)

Product Details

Immunogen:	Synthetic peptide - KLH conjugated - corresponding to the central region (between 256-289aa) of human NFKBIL1
Isotype:	Ig Fraction
Specificity:	This antibody recognizes human NFKBIL1.
Purification:	Purified through a Protein A column followed by peptide affinity purification

Target Details

Target:	NFKBIL1
Alternative Name:	NFKBIL1 (NFKBIL1 Products)

Target Details

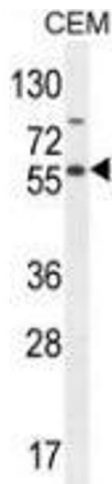
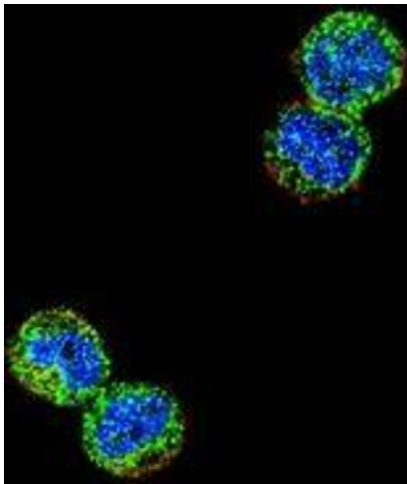
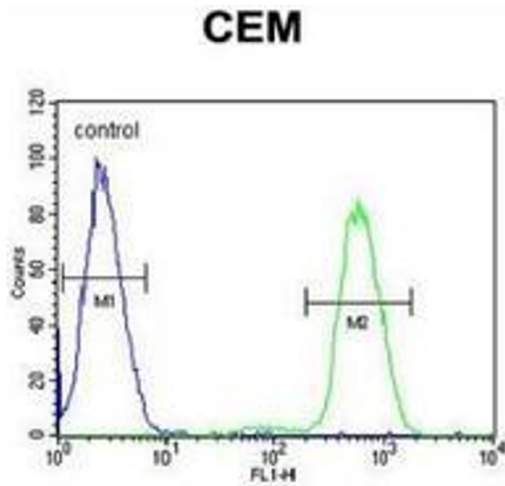
Background:	The NFKBIL1 gene encodes a divergent member of the I-kappa-B family of proteins. Its function has not been determined. The gene lies within the major histocompatibility complex (MHC) class I region on chromosome 6. Multiple transcript variants encoding different isoforms have been found for this gene. Synonyms: I-kappa-B-like protein, IKBL, IkappaBL, Inhibitor of kappa B-like protein, NF-kappa-B inhibitor-like protein 1, Nuclear factor of kappa light polypeptide gene enhancer in B-cells inhibitor-like 1
Molecular Weight:	43204 Da
Gene ID:	4795
NCBI Accession:	NP_001138433
Pathways:	Cellular Response to Molecule of Bacterial Origin, Maintenance of Protein Location

Application Details

Application Notes:	Optimal working dilution should be determined by the investigator.
Restrictions:	For Research Use only

Handling

Format:	Liquid
Concentration:	0.25 mg/mL
Buffer:	PBS with 0.09 % (W/V) Sodium azide
Preservative:	Sodium azide
Precaution of Use:	This product contains sodium azide: a POISONOUS AND HAZARDOUS SUBSTANCE which should be handled by trained staff only.
Handling Advice:	Avoid repeated freezing and thawing.
Storage:	4 °C/-20 °C
Storage Comment:	Store undiluted at 2-8 °C for one month or (in aliquots) at -20 °C for longer.



Flow Cytometry

Image 1. Flow cytometric analysis of CEM cells (right histogram) compared to a negative control cell (left histogram) using NFKBIL1 Antibody , followed by FITC-conjugated goat-anti-rabbit secondary antibodies.

Immunofluorescence

Image 2. Confocal immunofluorescent analysis of MDA-MB435 cells using NFKBIL1 Antibody , followed by Alexa Fluor 488-conjugated goat anti-rabbit IgG (green). Actin filaments have been labeled with Alexa Fluor 555 phalloidin (red). DAPI was used to stain the cell nuclear (blue).

Western Blotting

Image 3. Western blot analysis in CEM cell line lysates (35ug/lane) using NFKBIL1 Antibody . This demonstrates this antibody detected the NFKBIL1 protein (arrow).