

Datasheet for ABIN953712
anti-NKD2 antibody (C-Term)[Go to Product page](#)

4 Images

Overview

Quantity:	0.4 mL
Target:	NKD2
Binding Specificity:	AA 373-401, C-Term
Reactivity:	Human
Host:	Rabbit
Clonality:	Polyclonal
Conjugate:	This NKD2 antibody is un-conjugated
Application:	Western Blotting (WB), Flow Cytometry (FACS), Immunofluorescence (IF), Immunohistochemistry (Paraffin-embedded Sections) (IHC (p)), Enzyme Immunoassay (EIA)

Product Details

Immunogen:	Synthetic peptide - KLH conjugated - corresponding to the C-terminal region (between 373-401aa) of human NKD2
Isotype:	Ig Fraction
Specificity:	This antibody recognizes human NKD2 at C-term.
Purification:	Purified through a Protein A column followed by peptide affinity purification

Target Details

Target:	NKD2
Alternative Name:	NKD2 (NKD2 Products)

Target Details

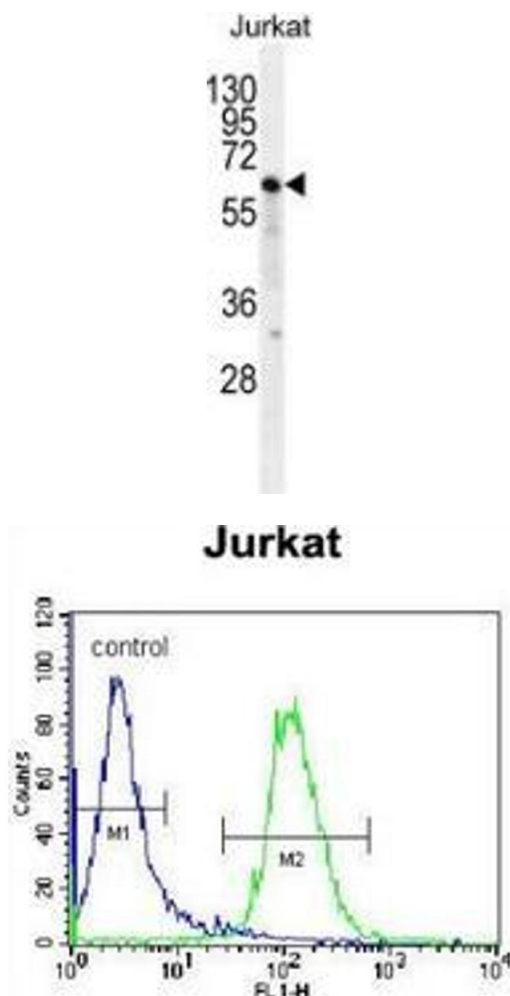
Background:	The NKD2 genes encodes a cell autonomous antagonist of the canonical Wnt signaling pathway.Synonyms: Naked-2, Protein naked cuticle homolog 2, hNkd2
Molecular Weight:	50055 Da
Gene ID:	85409
NCBI Accession:	NP_149111

Application Details

Application Notes:	Optimal working dilution should be determined by the investigator.
Restrictions:	For Research Use only

Handling

Format:	Liquid
Concentration:	0.25 mg/mL
Buffer:	PBS with 0.09 % (W/V) Sodium azide
Preservative:	Sodium azide
Precaution of Use:	This product contains sodium azide: a POISONOUS AND HAZARDOUS SUBSTANCE which should be handled by trained staff only.
Handling Advice:	Avoid repeated freezing and thawing.
Storage:	4 °C/-20 °C
Storage Comment:	Store undiluted at 2-8 °C for one month or (in aliquots) at -20 °C for longer.

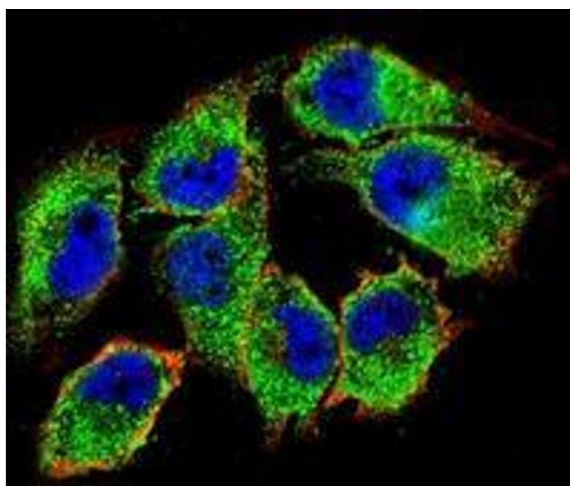


Western Blotting

Image 1. Western blot analysis in Jurkat cell line lysates (35ug/lane) using NKD2 Antibody (C-term). This demonstrates this antibody detected the NKD2 protein (arrow).

Flow Cytometry

Image 2. Flow cytometric analysis of Jurkat cells (right histogram) compared to a negative control cell (left histogram) using NKD2 Antibody (C-term), followed by FITC-conjugated donkey-anti-rabbit secondary antibodies.



Immunofluorescence

Image 3. Confocal immunofluorescent analysis of A375 cells using NKD2 Antibody (C-term), followed by Alexa Fluor 488-conjugated goat anti-rabbit IgG (green). Actin filaments have been labeled with Alexa Fluor 555 phalloidin (red). DAPI was used to stain the cell nuclear (blue).

Please check the [product details page](#) for more images. Overall 4 images are available for ABIN953712.