



Datasheet for ABIN953716
anti-NKX1-2 antibody (N-Term)



[Go to Product page](#)

2 Images

Overview

Quantity:	0.4 mL
Target:	NKX1-2
Binding Specificity:	AA 53-82, N-Term
Reactivity:	Human
Host:	Rabbit
Clonality:	Polyclonal
Conjugate:	This NKX1-2 antibody is un-conjugated
Application:	Western Blotting (WB), Flow Cytometry (FACS), Enzyme Immunoassay (EIA)

Product Details

Immunogen:	Synthetic peptide - KLH conjugated - corresponding to the N-terminal region (between 53-82aa) of human NKX1-2
Isotype:	Ig Fraction
Specificity:	This antibody recognizes human NKX1-2 at N-term.
Purification:	Purified through a Protein A column followed by peptide affinity purification

Target Details

Target:	NKX1-2
Alternative Name:	NKX1-2 (NKX1-2 Products)
Background:	NKX1-2 may function in cell specification, particularly in the CNS (By similarity).Synonyms:

Target Details

C10orf121, NK1 transcription factor-related protein 2, NKX1.1

Molecular Weight: 34708 Da

Gene ID: 390010

NCBI Accession: [NP_001139812](#)

Application Details

Application Notes: Optimal working dilution should be determined by the investigator.

Restrictions: For Research Use only

Handling

Format: Liquid

Concentration: 0.25 mg/mL

Buffer: PBS with 0.09 % (W/V) Sodium azide

Preservative: Sodium azide

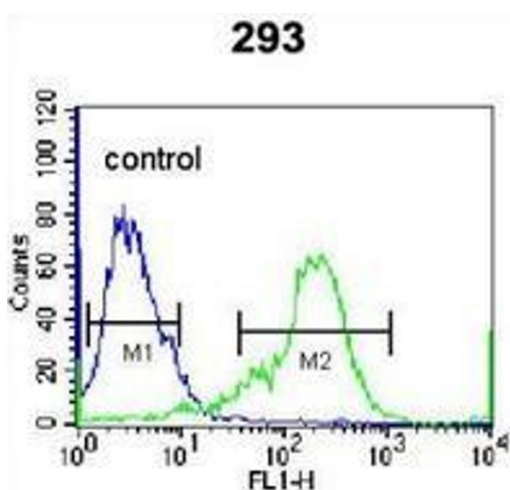
Precaution of Use: This product contains sodium azide: a POISONOUS AND HAZARDOUS SUBSTANCE which should be handled by trained staff only.

Handling Advice: Avoid repeated freezing and thawing.

Storage: 4 °C/-20 °C

Storage Comment: Store undiluted at 2-8 °C for one month or (in aliquots) at -20 °C for longer.

Images



Flow Cytometry

Image 1. Flow cytometric analysis of 293 cells (right histogram) compared to a negative control cell (left histogram) using NKX1-2 Antibody (N-term), followed by FITC-conjugated secondary antibodies.



Western Blotting

Image 2. Western blot analysis in 293 cell line lysates (35ug/lane) using NKX1-2 Antibody (N-term). This demonstrates this antibody detected the NKX1-2 protein (arrow).