

Datasheet for ABIN953756

**anti-Neuritin 1-Like antibody (Middle Region)**[Go to Product page](#)**2** Images

## Overview

Quantity:	0.4 mL
Target:	Neuritin 1-Like (NRN1L)
Binding Specificity:	AA 39-70, Middle Region
Reactivity:	Human
Host:	Rabbit
Clonality:	Polyclonal
Conjugate:	This Neuritin 1-Like antibody is un-conjugated
Application:	Western Blotting (WB), Enzyme Immunoassay (EIA)

## Product Details

Immunogen:	KLH conjugated synthetic peptide between 39-70 amino acids from the Central region of human NRN1L
Isotype:	Ig Fraction
Specificity:	This antibody reacts to NRN1L.
Cross-Reactivity (Details):	Species reactivity (tested):Human.
Purification:	Affinity chromatography on Protein A

## Target Details

Target:	Neuritin 1-Like (NRN1L)
Alternative Name:	NRN1L ( <a href="#">NRN1L Products</a> )

## Target Details

Background: Synonyms: Neuritin-like protein

Molecular Weight: 17786 Da

Gene ID: 123904

NCBI Accession: [NP\\_940845](#)

## Application Details

Application Notes: Optimal working dilution should be determined by the investigator.

Restrictions: For Research Use only

## Handling

Format: Liquid

Concentration: 0.25 mg/mL

Buffer: PBS, 0.09 % (W/V) sodium azide

Preservative: Sodium azide

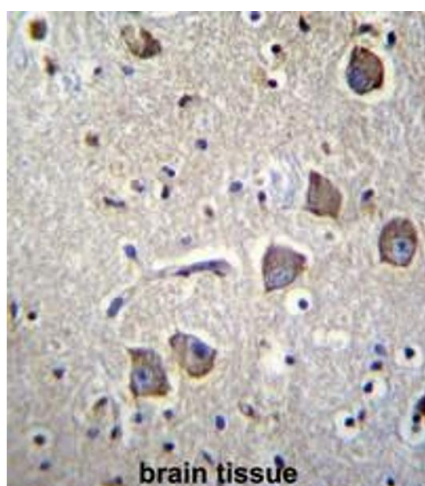
Precaution of Use: This product contains sodium azide: a POISONOUS AND HAZARDOUS SUBSTANCE which should be handled by trained staff only.

Handling Advice: Avoid repeated freezing and thawing.

Storage: 4 °C/-20 °C

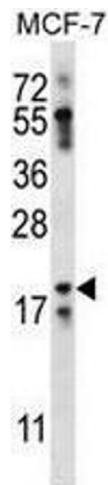
Storage Comment: Store the antibody undiluted at 2-8 °C for one month or (in aliquots) at -20 °C for longer.

## Images



### Immunohistochemistry (Paraffin-embedded Sections)

**Image 1.** NRN1L Antibody (Center) immunohistochemistry analysis in formalin fixed and paraffin embedded human brain tissue followed by peroxidase conjugation of the secondary antibody and DAB staining. This data demonstrates the use of NRN1L Antibody (Center) for immunohistochemistry. Clinical relevance has not been evaluated.



Western Blotting

**Image 2.** NRN1L Antibody (Center) western blot analysis in MCF-7 cell line lysates (35µg/lane). This demonstrates the NRN1L antibody detected the NRN1L protein (arrow).