

Datasheet for ABIN953768
anti-PNPLA6 antibody (C-Term)



[Go to Product page](#)

1 Image

Overview

Quantity:	0.4 mL
Target:	PNPLA6
Binding Specificity:	AA 960-990, C-Term
Reactivity:	Human
Host:	Rabbit
Clonality:	Polyclonal
Conjugate:	This PNPLA6 antibody is un-conjugated
Application:	Western Blotting (WB), Enzyme Immunoassay (EIA)

Product Details

Immunogen:	KLH conjugated synthetic peptide between 960-990 amino acids from the C-terminal region of human NTE Genename: PNPLA6
Isotype:	Ig Fraction
Specificity:	This antibody recognizes Human NTE (C-term).
Purification:	Protein A column, followed by peptide affinity purification

Target Details

Target:	PNPLA6
Alternative Name:	NTE (PNPLA6 Products)
Background:	PNPLA6 is a phospholipase that deacetylates intracellular phosphatidylcholine to produce

Target Details

glycerophosphocholine. It is thought to function in neurite outgrowth and process elongation during neuronal differentiation. The protein is anchored to the cytoplasmic face of the endoplasmic reticulum in both neurons and non-neuronal cells. Mutations in this gene result in autosomal recessive spastic paraplegia, and the protein is the target for neurodegeneration induced by organophosphorus compounds and chemical warfare agents. Multiple transcript variants encoding different isoforms have been found for this gene. [provided by RefSeq].Synonyms: Neuropathy target esterase, PNPLA6

Molecular Weight: 149995 Da

Gene ID: 10908

NCBI Accession: [NP_001159583](#)

Pathways: [Ribonucleoside Biosynthetic Process](#)

Application Details

Application Notes: Optimal working dilution should be determined by the investigator.

Restrictions: For Research Use only

Handling

Format: Liquid

Concentration: 0.25 mg/mL

Buffer: PBS containing 0.09 % (W/V) Sodium Azide as preservative

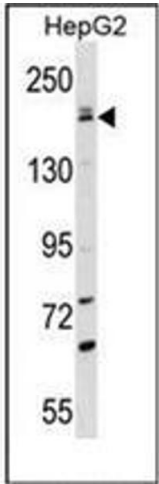
Preservative: Sodium azide

Precaution of Use: This product contains sodium azide: a POISONOUS AND HAZARDOUS SUBSTANCE which should be handled by trained staff only.

Handling Advice: Avoid repeated freezing and thawing.

Storage: 4 °C/-20 °C

Storage Comment: Store undiluted at 2-8 °C for one month or (in aliquots) at -20 °C for longer.



Western Blotting

Image 1. Western blot analysis of NTE Antibody (C-term) in HepG2 cell line lysates (35ug/lane). This demonstrates the NTE antibody detected the PNPLA6 protein (arrow).