

Datasheet for ABIN953772
anti-NUCKS1 antibody (N-Term)

2 Images

[Go to Product page](#)

Overview

Quantity:	0.4 mL
Target:	NUCKS1
Binding Specificity:	AA 52-81, N-Term
Reactivity:	Human
Host:	Rabbit
Clonality:	Polyclonal
Conjugate:	This NUCKS1 antibody is un-conjugated
Application:	Western Blotting (WB), Flow Cytometry (FACS), Enzyme Immunoassay (EIA)

Product Details

Immunogen:	Synthetic peptide - KLH conjugated - corresponding to the N-terminal region (between 52-81aa) of human NUCKS.
Isotype:	Ig Fraction
Specificity:	This antibody recognizes NUCKS at N-term.
Cross-Reactivity (Details):	Species reactivity (tested):Human
Purification:	Purified through a Protein A column followed by peptide affinity purification

Target Details

Target:	NUCKS1
Alternative Name:	NUCKS (NUCKS1 Products)

Target Details

Background:	Synonyms: JC7, NUCKS1, Nuclear ubiquitous casein and cyclin-dependent kinases substrate, P1
Gene ID:	64710
NCBI Accession:	NP_073568

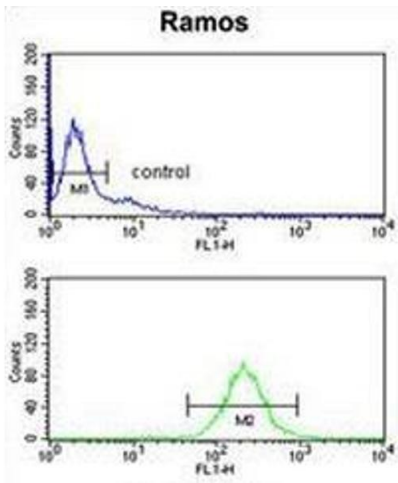
Application Details

Application Notes:	Optimal working dilution should be determined by the investigator.
Restrictions:	For Research Use only

Handling

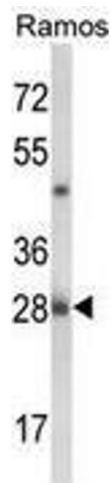
Format:	Liquid
Concentration:	0.25 mg/mL
Buffer:	PBS with 0.09 % (W/V) Sodium azide
Preservative:	Sodium azide
Precaution of Use:	This product contains sodium azide: a POISONOUS AND HAZARDOUS SUBSTANCE which should be handled by trained staff only.
Handling Advice:	Avoid repeated freezing and thawing.
Storage:	4 °C/-20 °C
Storage Comment:	Store undiluted at 2-8 °C for one month or (in aliquots) at -20 °C for longer.

Images



Flow Cytometry

Image 1. Flow cytometry analysis of Ramos cells (bottom histogram) compared to a negative control cell (top histogram) using NUCKS Antibody (N-term), followed by FITC-conjugated goat-anti-rabbit secondary antibodies.



Western Blotting

Image 2. Western blot analysis of NUCKS1 (arrow) in Ramos cell line lysates (35ug/lane) using NUCKS