

Datasheet for ABIN953773

anti-Nucleolin antibody (Middle Region)



[Go to Product page](#)

4 Images

Overview

Quantity:	0.4 mL
Target:	Nucleolin (NCL)
Binding Specificity:	AA 435-463, Middle Region
Reactivity:	Human
Host:	Rabbit
Clonality:	Polyclonal
Conjugate:	This Nucleolin antibody is un-conjugated
Application:	Western Blotting (WB), Immunofluorescence (IF), Immunohistochemistry (Paraffin-embedded Sections) (IHC (p)), Enzyme Immunoassay (EIA)

Product Details

Immunogen:	KLH conjugated synthetic peptide between 435-463 amino acids from the Central region of Human Nucleolin. Genename: NCL
Isotype:	Ig Fraction
Specificity:	This antibody recognizes Human Nucleolin (Center).
Purification:	Protein A column, followed by peptide affinity purification

Target Details

Target:	Nucleolin (NCL)
Alternative Name:	Nucleolin (NCL Products)

Target Details

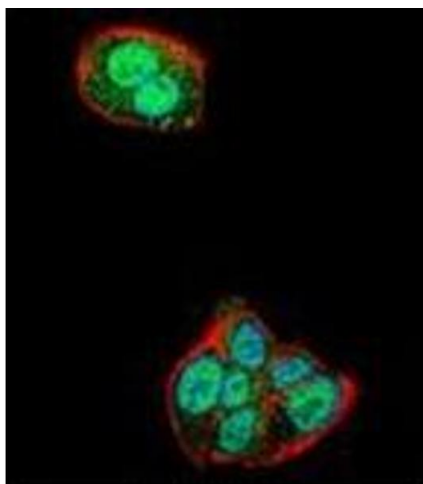
Background:	Nucleolin (NCL), a eukaryotic nucleolar phosphoprotein, is involved in the synthesis and maturation of ribosomes. It is located mainly in dense fibrillar regions of the nucleolus. Human NCL gene consists of 14 exons with 13 introns and spans approximately 11kb. The intron 11 of the NCL gene encodes a small nucleolar RNA, termed U20Synonyms: NCL
Molecular Weight:	76614 Da
Gene ID:	4691
NCBI Accession:	NP_005372
Pathways:	Ribonucleoprotein Complex Subunit Organization

Application Details

Application Notes:	Optimal working dilution should be determined by the investigator.
Restrictions:	For Research Use only

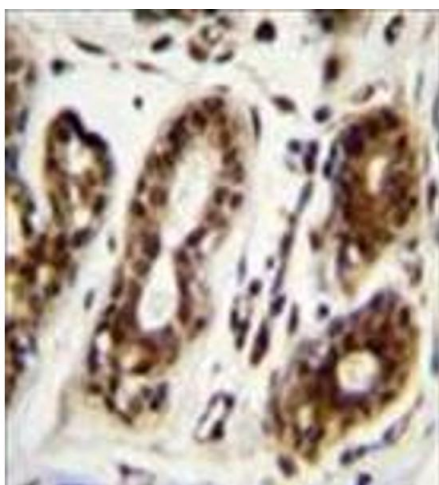
Handling

Format:	Liquid
Concentration:	0.25 mg/mL
Buffer:	PBS, 0.09 % (W/V) Sodium Azide
Preservative:	Sodium azide
Precaution of Use:	This product contains sodium azide: a POISONOUS AND HAZARDOUS SUBSTANCE which should be handled by trained staff only.
Handling Advice:	Avoid repeated freezing and thawing.
Storage:	4 °C/-20 °C
Storage Comment:	Store undiluted at 2-8 °C for one month or (in aliquots) at -20 °C for longer.



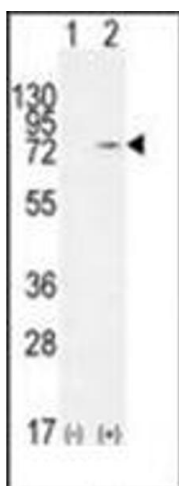
Immunofluorescence

Image 1. Confocal immunofluorescent analysis of Nucleolin Antibody (Center) Cat.-No AP52825PU-N with HepG2 cell followed by Alexa Fluor 488-conjugated goat anti-rabbit IgG (green). Actin filaments have been labeled with Alexa Fluor 555 phalloidin (red). DAPI was used to stain the cell nuclear (blue).



Immunohistochemistry (Paraffin-embedded Sections)

Image 2. Formalin fixed, paraffin embedded human breast tissue stained with Nucleolin Antibody (Center) followed by peroxidase conjugation of the secondary antibody and DAB staining.



Western Blotting

Image 3. Western blot analysis of NCL (arrow) using Nucleolin Antibody (Center) Cat.-No AP52825PU-N. 293 cell lysates (2 ug/lane) either nontransfected (Lane 1) or transiently transfected (Lane 2) with the NCL gene.

Please check the [product details page](#) for more images. Overall 4 images are available for ABIN953773.