

Datasheet for ABIN953775
anti-NXN antibody (Middle Region)

2 Images

[Go to Product page](#)

Overview

Quantity:	0.4 mL
Target:	NXN
Binding Specificity:	AA 220-249, Middle Region
Reactivity:	Human, Mouse
Host:	Rabbit
Clonality:	Polyclonal
Conjugate:	This NXN antibody is un-conjugated
Application:	Western Blotting (WB), Immunohistochemistry (Paraffin-embedded Sections) (IHC (p)), Enzyme Immunoassay (EIA)

Product Details

Immunogen:	KLH conjugated synthetic peptide between 220-249 amino acids from the Central region of Human Nucleoredoxin. Genename: NXN
Isotype:	Ig Fraction
Specificity:	This antibody recognizes Human and Mouse Nucleoredoxin (Center).
Purification:	Protein A column, followed by peptide affinity purification

Target Details

Target:	NXN
Alternative Name:	Nucleoredoxin (NXN Products)

Target Details

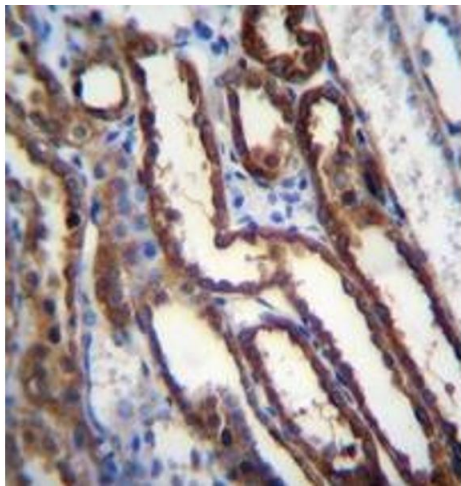
Background:	NXN functions as a redox-dependent negative regulator of the Wnt signaling pathway. May function as a transcriptional regulator. May regulate phosphatase 2A (By similarity).Synonyms: NRX, NXN
Molecular Weight:	48392 Da
Gene ID:	64359
NCBI Accession:	NP_071908

Application Details

Application Notes:	Optimal working dilution should be determined by the investigator.
Restrictions:	For Research Use only

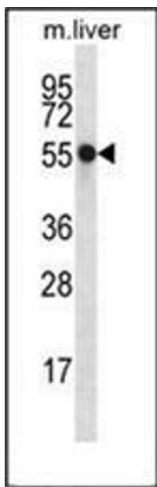
Handling

Format:	Liquid
Concentration:	0.25 mg/mL
Buffer:	PBS containing 0.09 % (W/V) Sodium Azide as preservative
Preservative:	Sodium azide
Precaution of Use:	This product contains sodium azide: a POISONOUS AND HAZARDOUS SUBSTANCE which should be handled by trained staff only.
Handling Advice:	Avoid repeated freezing and thawing.
Storage:	4 °C/-20 °C
Storage Comment:	Store undiluted at 2-8 °C for one month or (in aliquots) at -20 °C for longer.



Immunohistochemistry (Paraffin-embedded Sections)

Image 1. Immunohistochemistry analysis in formalin fixed and paraffin embedded human kidney tissue reacted with Nucleoredoxin Antibody (Center) followed by peroxidase conjugation of the secondary antibody and DAB staining.



Western Blotting

Image 2. Western blot analysis of Nucleoredoxin Antibody (Center) in mouse liver tissue lysates (35ug/lane). This demonstrates the NXN antibody detected the NXN protein (arrow).