



[Go to Product page](#)

Datasheet for ABIN953783

## anti-NUDT22 antibody (C-Term)

### 3 Images

#### Overview

Quantity:	0.4 mL
Target:	NUDT22
Binding Specificity:	AA 227-257, C-Term
Reactivity:	Human
Host:	Rabbit
Clonality:	Polyclonal
Conjugate:	This NUDT22 antibody is un-conjugated
Application:	Western Blotting (WB), Flow Cytometry (FACS), Immunohistochemistry (Paraffin-embedded Sections) (IHC (p)), Enzyme Immunoassay (EIA)

#### Product Details

Immunogen:	Synthetic peptide - KLH conjugated - corresponding to the C-terminal region (between 227-257aa) of human NUDT22.
Isotype:	Ig Fraction
Specificity:	This antibody recognizes NUDT22 at C-term.
Cross-Reactivity (Details):	Species reactivity (tested):Human
Purification:	Purified through a Protein A column followed by peptide affinity purification

#### Target Details

Target:	NUDT22
---------	--------

## Target Details

Alternative Name:	NUDT22 ( <a href="#">NUDT22 Products</a> )
Background:	Synonyms: Nucleoside diphosphate-linked moiety X motif 22
Gene ID:	84304
NCBI Accession:	<a href="#">NP_001122084</a>

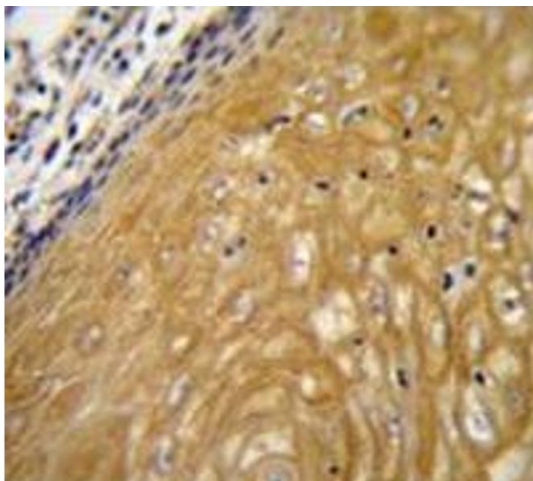
## Application Details

Application Notes:	Optimal working dilution should be determined by the investigator.
Restrictions:	For Research Use only

## Handling

Format:	Liquid
Concentration:	0.25 mg/mL
Buffer:	PBS with 0.09 % (W/V) Sodium azide
Preservative:	Sodium azide
Precaution of Use:	This product contains sodium azide: a POISONOUS AND HAZARDOUS SUBSTANCE which should be handled by trained staff only.
Handling Advice:	Avoid repeated freezing and thawing.
Storage:	4 °C/-20 °C
Storage Comment:	Store undiluted at 2-8 °C for one month or (in aliquots) at -20 °C for longer.

## Images



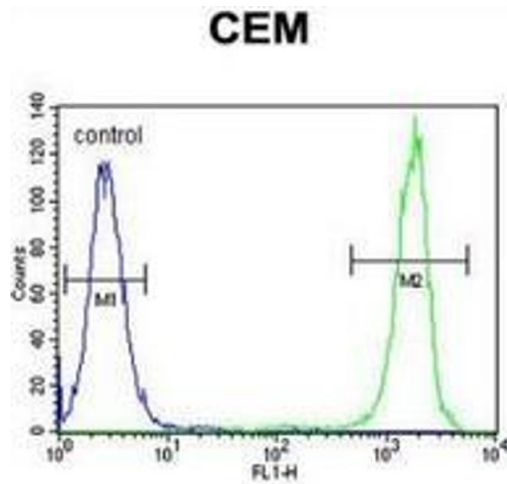
### Immunohistochemistry (Paraffin-embedded Sections)

**Image 1.** Immunohistochemistry analysis in human esophageal carcinoma (Formalin-fixed, Paraffin-embedded) using NUDT22 Antibody (C-term), followed by peroxidase conjugation of the secondary antibody and DAB staining. This data demonstrates the use of NUDT22 antibody for IHC; Clinical relevance has not been evaluated.



### Western Blotting

**Image 2.** Western blot analysis in CEM cell line lysates (35ug/lane) using NUDT22 Antibody (C-term). This demonstrates the NUDT22 antibody detected the NUDT22 protein (arrow).



### Flow Cytometry

**Image 3.** Flow cytometric analysis of CEM cells (right histogram) compared to a negative control cell (left histogram) using NUDT22 Antibody (C-term), followed by FITC-conjugated goat-anti-rabbit secondary antibodies.