



Datasheet for ABIN953785
anti-NUDT8 antibody (N-Term)



[Go to Product page](#)

3 Images

Overview

| | |
|----------------------|---|
| Quantity: | 0.4 mL |
| Target: | NUDT8 |
| Binding Specificity: | AA 49-78, N-Term |
| Reactivity: | Human |
| Host: | Rabbit |
| Clonality: | Polyclonal |
| Conjugate: | This NUDT8 antibody is un-conjugated |
| Application: | Western Blotting (WB), Flow Cytometry (FACS), Immunohistochemistry (Paraffin-embedded Sections) (IHC (p)), Enzyme Immunoassay (EIA) |

Product Details

| | |
|---------------|--|
| Immunogen: | conjugated synthetic peptide between 49-78 amino acids from the N-terminal region of human NUDT8 |
| Isotype: | Ig Fraction |
| Specificity: | This antibody recognizes Human NUDT8 (N-term). |
| Purification: | Protein A column, followed by peptide affinity purification |

Target Details

| | |
|-------------------|--|
| Target: | NUDT8 |
| Alternative Name: | NUDT8 (NUDT8 Products) |

Target Details

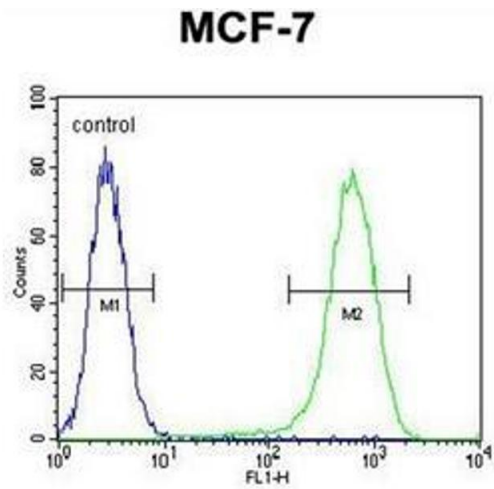
| | |
|-------------------|---|
| Background: | Probably mediates the hydrolysis of some nucleoside diphosphate derivatives (By similarity).Synonyms: Nucleoside diphosphate-linked moiety X motif 8, Nudix motif 8 |
| Molecular Weight: | 25370 Da |
| Gene ID: | 254552 |
| NCBI Accession: | NP_862826 |

Application Details

| | |
|--------------------|--|
| Application Notes: | Optimal working dilution should be determined by the investigator. |
| Restrictions: | For Research Use only |

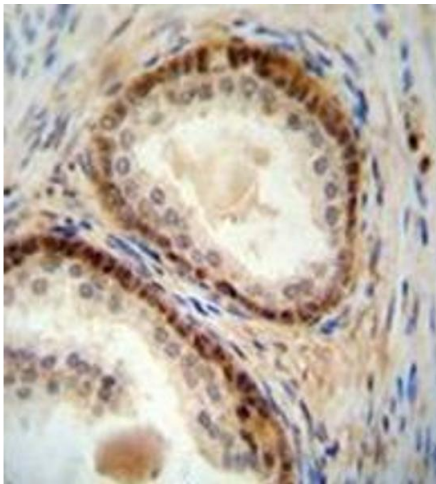
Handling

| | |
|--------------------|--|
| Format: | Liquid |
| Concentration: | 0.25 mg/mL |
| Buffer: | PBS containing 0.09 % (W/V) Sodium Azide as preservative |
| Preservative: | Sodium azide |
| Precaution of Use: | This product contains sodium azide: a POISONOUS AND HAZARDOUS SUBSTANCE which should be handled by trained staff only. |
| Handling Advice: | Avoid repeated freezing and thawing. |
| Storage: | 4 °C/-20 °C |
| Storage Comment: | Store undiluted at 2-8 °C for one month or (in aliquots) at -20 °C for longer. |



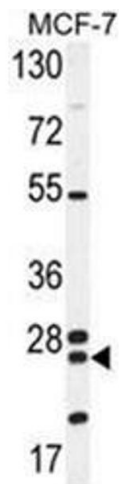
Flow Cytometry

Image 1. Flow cytometric analysis of MCF-7 cells using NUDT8 Antibody (N-term) Cat.-No AP52965PU-N (right histogram) compared to a negative control cell (left histogram). FITC-conjugated goat-anti-rabbit secondary antibodies were used for the analysis.



Immunohistochemistry (Paraffin-embedded Sections)

Image 2. Immunohistochemistry analysis in formalin fixed and paraffin embedded human prostate carcinoma reacted with NUDT8 Antibody (N-term) followed by peroxidase conjugation of the secondary antibody and DAB staining.



Western Blotting

Image 3. Western blot analysis of NUDT8 Antibody (N-term) in MCF-7 cell line lysates (35ug/lane). This demonstrates the NUDT8 antibody detected the NUDT8 protein (arrow).