

Datasheet for ABIN953791

anti-NUP160 antibody (Middle Region)**2** Images[Go to Product page](#)

Overview

Quantity:	0.4 mL
Target:	NUP160
Binding Specificity:	AA 401-429, Middle Region
Reactivity:	Mouse, Human
Host:	Rabbit
Clonality:	Polyclonal
Conjugate:	This NUP160 antibody is un-conjugated
Application:	Western Blotting (WB), Immunohistochemistry (Paraffin-embedded Sections) (IHC (p)), Enzyme Immunoassay (EIA)

Product Details

Immunogen:	KLH conjugated synthetic peptide between 401-429 amino acids from the Central region of Human NUP160.
Isotype:	Ig Fraction
Specificity:	This antibody recognizes Human and Mouse NUP160 (Center).
Purification:	Protein A column, followed by peptide affinity purification

Target Details

Target:	NUP160
Alternative Name:	NUP160 (NUP160 Products)

Target Details

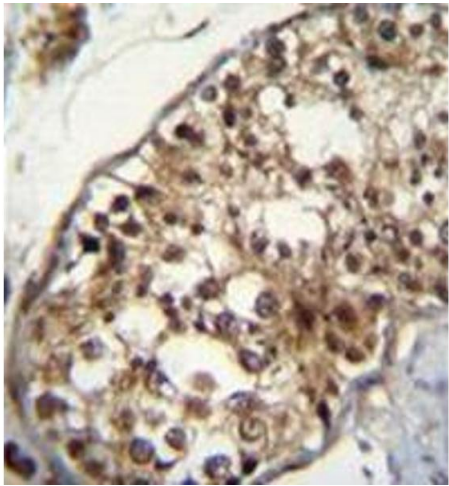
Background:	NUP160 is 1 of up to 60 proteins that make up the 120-MD nuclear pore complex, which mediates nucleoplasmic transport.Synonyms: 160 kDa nucleoporin, KIAA0197, NUP120, Nuclear pore complex protein Nup160, Nucleoporin Nup160
Molecular Weight:	162121 Da
Gene ID:	23279
NCBI Accession:	NP_056046
Pathways:	Protein targeting to Nucleus

Application Details

Application Notes:	Optimal working dilution should be determined by the investigator.
Restrictions:	For Research Use only

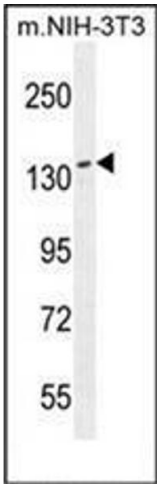
Handling

Format:	Liquid
Concentration:	0.25 mg/mL
Buffer:	PBS containing 0.09 % (W/V) Sodium Azide as preservative
Preservative:	Sodium azide
Precaution of Use:	This product contains sodium azide: a POISONOUS AND HAZARDOUS SUBSTANCE which should be handled by trained staff only.
Handling Advice:	Avoid repeated freezing and thawing.
Storage:	4 °C/-20 °C
Storage Comment:	Store undiluted at 2-8 °C for one month or (in aliquots) at -20 °C for longer.



Immunohistochemistry (Paraffin-embedded Sections)

Image 1. Immunohistochemistry analysis in formalin fixed and paraffin embedded human testis tissue reacted with NUP160 Antibody (Center) followed by peroxidase conjugation of the secondary antibody and DAB staining.



Western Blotting

Image 2. Western blot analysis of NUP160 Antibody (Center) in mouse NIH-3T3 cell line lysates (35ug/lane). This demonstrates the NUP160 antibody detected the NUP160 protein (arrow).