

Datasheet for ABIN953793  
**anti-NUP35 antibody (C-Term)**

## 2 Images

[Go to Product page](#)

## Overview

Quantity:	0.4 mL
Target:	NUP35
Binding Specificity:	AA 296-326, C-Term
Reactivity:	Human
Host:	Rabbit
Clonality:	Polyclonal
Conjugate:	This NUP35 antibody is un-conjugated
Application:	Western Blotting (WB), Flow Cytometry (FACS), Enzyme Immunoassay (EIA)

## Product Details

Immunogen:	KLH conjugated synthetic peptide between 296-326 amino acids from the C-terminal region of human NUP35
Isotype:	Ig Fraction
Specificity:	This antibody recognizes Human NUP35 (C-term).
Purification:	Protein A column, followed by peptide affinity purification

## Target Details

Target:	NUP35
Alternative Name:	NUP35 ( <a href="#">NUP35 Products</a> )
Background:	This gene encodes a member of the nucleoporin family. The protein is localized to the nuclear

## Target Details

rim and is part of the nuclear pore complex (NPC). All molecules entering or leaving the nucleus either diffuse through or are actively transported by the NPC. Synonyms: 35 kDa nucleoporin, MP44, Mitotic phosphoprotein 44, NUP53, Nuclear pore complex protein Nup53, Nucleoporin NUP53, Nucleoporin Nup35

Molecular Weight: 34774 Da

Gene ID: 129401

NCBI Accession: [NP\\_612142](#)

## Application Details

Application Notes: Optimal working dilution should be determined by the investigator.

Restrictions: For Research Use only

## Handling

Format: Liquid

Concentration: 0.25 mg/mL

Buffer: PBS containing 0.09 % (W/V) Sodium Azide as preservative

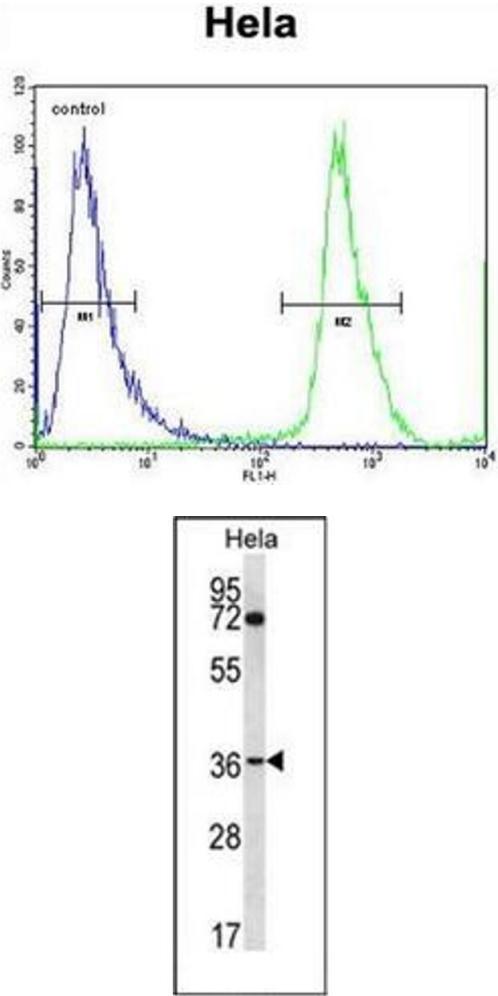
Preservative: Sodium azide

Precaution of Use: This product contains sodium azide: a POISONOUS AND HAZARDOUS SUBSTANCE which should be handled by trained staff only.

Handling Advice: Avoid repeated freezing and thawing.

Storage: 4 °C/-20 °C

Storage Comment: Store undiluted at 2-8 °C for one month or (in aliquots) at -20 °C for longer.



Flow Cytometry

**Image 1.** Flow cytometric analysis of HeLa cells using NUP35 Antibody (C-term) Cat.-No AP52973PU-N (right histogram) compared to a negative control cell (left histogram). FITC-conjugated goat-anti-rabbit secondary antibodies were used for the analysis.

Western Blotting

**Image 2.** Western blot analysis of NUP35 Antibody (C-term) in HeLa cell line lysates (35ug/lane). This demonstrates the NUP35 antibody detected the NUP35 protein (arrow).