

Datasheet for ABIN953795

anti-NUPL2 antibody (N-Term)[Go to Product page](#)**1** Image

Overview

| | |
|----------------------|---|
| Quantity: | 0.4 mL |
| Target: | NUPL2 |
| Binding Specificity: | AA 94-124, N-Term |
| Reactivity: | Human |
| Host: | Rabbit |
| Clonality: | Polyclonal |
| Conjugate: | This NUPL2 antibody is un-conjugated |
| Application: | Western Blotting (WB), Enzyme Immunoassay (EIA) |

Product Details

| | |
|---------------|--|
| Immunogen: | KLH conjugated synthetic peptide between 94~124 amino acids from the N-terminal region of Human NUPL2. |
| Isotype: | Ig Fraction |
| Specificity: | This antibody recognizes Human NULP2 (N-term). |
| Purification: | Protein A column, followed by peptide affinity purification |

Target Details

| | |
|-------------------|--|
| Target: | NUPL2 |
| Alternative Name: | NUPL2 (NUPL2 Products) |
| Background: | Required for the export of mRNAs containing poly(A) tails from the nucleus into the cytoplasm. |

Target Details

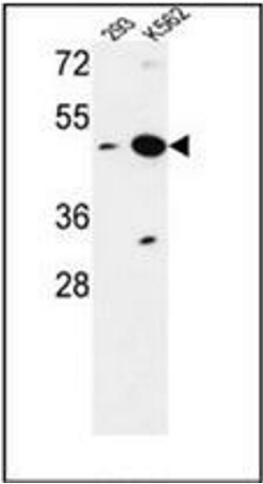
| | |
|-------------------|---|
| | In case of infection by HIV-1, it may participate in the docking of viral Vpr at the nuclear envelope.Synonyms: CG1, NLP-1, NUP42 homolog, Nucleoporin-like 2 |
| Molecular Weight: | 44872 Da |
| Gene ID: | 11097 |
| NCBI Accession: | NP_031368 |

Application Details

| | |
|--------------------|--|
| Application Notes: | Optimal working dilution should be determined by the investigator. |
| Restrictions: | For Research Use only |

Handling

| | |
|--------------------|--|
| Format: | Liquid |
| Concentration: | 0.25 mg/mL |
| Buffer: | PBS containing 0.09 % (W/V) Sodium Azide as preservative |
| Preservative: | Sodium azide |
| Precaution of Use: | This product contains sodium azide: a POISONOUS AND HAZARDOUS SUBSTANCE which should be handled by trained staff only. |
| Handling Advice: | Avoid repeated freezing and thawing. |
| Storage: | 4 °C/-20 °C |
| Storage Comment: | Store undiluted at 2-8 °C for one month or (in aliquots) at -20 °C for longer. |



Western Blotting

Image 1. Western blot analysis of NUPL2 Antibody (N-term) in 293, K562 cell line lysates (35ug/lane). This demonstrates the NUPL2 antibody detected the NUPL2 protein (arrow).