

Datasheet for ABIN953800
anti-OBFC1 antibody (C-Term)



[Go to Product page](#)

1 Image

Overview

Quantity:	0.4 mL
Target:	OBFC1
Binding Specificity:	AA 276-306, C-Term
Reactivity:	Human
Host:	Rabbit
Clonality:	Polyclonal
Conjugate:	This OBFC1 antibody is un-conjugated
Application:	Western Blotting (WB), Enzyme Immunoassay (EIA)

Product Details

Immunogen:	KLH conjugated synthetic peptide between 276-306 amino acids from the C-terminal region of Human OBFC1
Isotype:	Ig Fraction
Specificity:	This antibody recognizes Human OBFC1 (C-term).
Purification:	Protein A column, followed by peptide affinity purification

Target Details

Target:	OBFC1
Alternative Name:	OBFC1 (OBFC1 Products)
Background:	OBFC1 and C17ORF68 (MIM 613129) are subunits of an alpha accessory factor (AAF) that

Target Details

stimulates the activity of DNA polymerase-alpha-primase (see MIM 176636), the enzyme that initiates DNA replication (Casteel et al., 2009 [PubMed 19119139]). OBFC1 also appears to function in a telomere-associated complex with C17ORF68 and TEN1 (C17ORF106, MIM 613130) (Miyake et al., 2009 [PubMed 19854130]).Synonyms: CST complex subunit STN1, Oligonucleotide/oligosaccharide-binding fold-containing protein 1, Suppressor of cdc thirteen homolog

Molecular Weight: 42119 Da

Gene ID: 79991

NCBI Accession: [NP_079204](#)

Application Details

Application Notes: Optimal working dilution should be determined by the investigator.

Restrictions: For Research Use only

Handling

Format: Liquid

Concentration: 0.25 mg/mL

Buffer: PBS containing 0.09 % (W/V) Sodium Azide as preservative

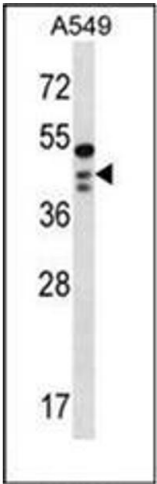
Preservative: Sodium azide

Precaution of Use: This product contains sodium azide: a POISONOUS AND HAZARDOUS SUBSTANCE which should be handled by trained staff only.

Handling Advice: Avoid repeated freezing and thawing.

Storage: 4 °C/-20 °C

Storage Comment: Store undiluted at 2-8 °C for one month or (in aliquots) at -20 °C for longer.



Western Blotting

Image 1. Western blot analysis of OBFC1 Antibody (C-term) in A549 cell line lysates (35ug/lane). This demonstrates the OBFC1 antibody detected the OBFC1 protein (arrow).