

Datasheet for ABIN953802
anti-SSBP1 antibody (C-Term)



[Go to Product page](#)

1 Image

Overview

Quantity:	0.4 mL
Target:	SSBP1
Binding Specificity:	AA 180-211, C-Term
Reactivity:	Human, Mouse
Host:	Rabbit
Clonality:	Polyclonal
Conjugate:	This SSBP1 antibody is un-conjugated
Application:	Western Blotting (WB), Enzyme Immunoassay (EIA)

Product Details

Immunogen:	KLH conjugated synthetic peptide between 180-211 amino acids from the C-terminal region of human OBFC2B
Isotype:	Ig Fraction
Specificity:	This antibody recognizes Human and Mouse OBFC2B (C-term).
Purification:	Protein A column, followed by peptide affinity purification

Target Details

Target:	SSBP1
Alternative Name:	OBFC2B (SSBP1 Products)
Background:	Single-stranded DNA (ssDNA)-binding proteins, such as OBFC2B, are ubiquitous and essential

Target Details

for a variety of DNA metabolic processes, including replication, recombination, and detection and repair of damage (Richard et al., 2008 [PubMed 18449195]).[supplied by OMIM].Synonyms: Oligonucleotide/oligosaccharide-binding fold-containing protein 2B, SOSS-B1, SSB1, Sensor of single-strand DNA complex subunit B1, Sensor of ssDNA B1, Single-stranded DNA-binding protein 1

Molecular Weight: 22338 Da

Gene ID: 79035

NCBI Accession: [NP_076973](#)

Pathways: [Chromatin Binding](#)

Application Details

Application Notes: Optimal working dilution should be determined by the investigator.

Restrictions: For Research Use only

Handling

Format: Liquid

Concentration: 0.25 mg/mL

Buffer: PBS containing 0.09 % (W/V) Sodium Azide as preservative

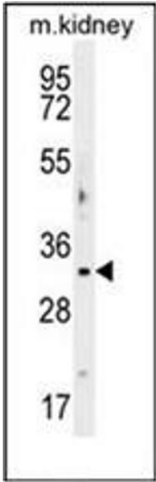
Preservative: Sodium azide

Precaution of Use: This product contains sodium azide: a POISONOUS AND HAZARDOUS SUBSTANCE which should be handled by trained staff only.

Handling Advice: Avoid repeated freezing and thawing.

Storage: 4 °C/-20 °C

Storage Comment: Store undiluted at 2-8 °C for one month or (in aliquots) at -20 °C for longer.



Western Blotting

Image 1. Western blot analysis of OBFC2B Antibody (C-term) in mouse kidney tissue lysates (35ug/lane). This demonstrates the OBFC2B antibody detected the OBFC2B protein (arrow).