

Datasheet for ABIN953803
anti-OC90 antibody (Middle Region)[Go to Product page](#)

2 Images

Overview

Quantity:	0.4 mL
Target:	OC90
Binding Specificity:	AA 230-260, Middle Region
Reactivity:	Human
Host:	Rabbit
Clonality:	Polyclonal
Conjugate:	This OC90 antibody is un-conjugated
Application:	Western Blotting (WB), Flow Cytometry (FACS), Enzyme Immunoassay (EIA)

Product Details

Immunogen:	KLH conjugated synthetic peptide between 230-260 amino acids from the Central region of Human OC90
Isotype:	Ig Fraction
Specificity:	This antibody recognizes Human OC90 (Center).
Purification:	Protein A column, followed by peptide affinity purification

Target Details

Target:	OC90
Alternative Name:	OC90 (OC90 Products)
Background:	It is unlikely that this protein has phospholipase A2 activity.Synonyms: Otoconin-90, PLA2L

Target Details

Molecular Weight:	53454 Da
Gene ID:	729330
NCBI Accession:	NP_001073868

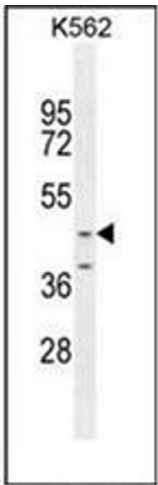
Application Details

Application Notes:	Optimal working dilution should be determined by the investigator.
Restrictions:	For Research Use only

Handling

Format:	Liquid
Concentration:	0.25 mg/mL
Buffer:	PBS containing 0.09 % (W/V) Sodium Azide as preservative
Preservative:	Sodium azide
Precaution of Use:	This product contains sodium azide: a POISONOUS AND HAZARDOUS SUBSTANCE which should be handled by trained staff only.
Handling Advice:	Avoid repeated freezing and thawing.
Storage:	4 °C/-20 °C
Storage Comment:	Store undiluted at 2-8 °C for one month or (in aliquots) at -20 °C for longer.

Images



Western Blotting

Image 1. Western blot analysis of OC90 Antibody (Center) in K562 cell line lysates (35ug/lane). This demonstrates the OC90 antibody detected the OC90 protein (arrow).

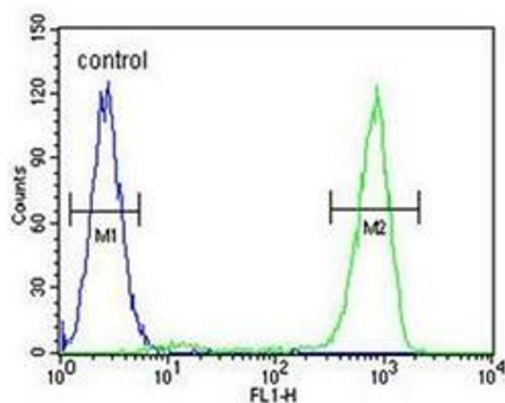
K562**Flow Cytometry**

Image 2. Flow cytometric analysis of K562 cells using OC90 Antibody (Center) Cat.-No AP52986PU-N (right histogram) compared to a negative control cell (left histogram). FITC-conjugated goat-anti-rabbit secondary antibodies were used for the analysis.