

Datasheet for ABIN953819
anti-OR10H1 antibody (C-Term)[Go to Product page](#)

2 Images

Overview

Quantity:	0.4 mL
Target:	OR10H1
Binding Specificity:	AA 248-277, C-Term
Reactivity:	Human
Host:	Rabbit
Clonality:	Polyclonal
Conjugate:	This OR10H1 antibody is un-conjugated
Application:	Western Blotting (WB), Flow Cytometry (FACS), Enzyme Immunoassay (EIA)

Product Details

Immunogen:	KLH conjugated synthetic peptide between 248-277 amino acids from the C-terminal region of Human Olfactory receptor 10H1 Genename: OR10H1
Isotype:	Ig Fraction
Specificity:	This antibody recognizes Human Olfactory receptor 10H1 (C-term).
Purification:	Protein A column, followed by peptide affinity purification

Target Details

Target:	OR10H1
Alternative Name:	Olfactory Receptor 10H1 (OR10H1 Products)
Background:	Olfactory receptors interact with odorant molecules in the nose, to initiate a neuronal response

Target Details

that triggers the perception of a smell. The olfactory receptor proteins are members of a large family of G-protein-coupled receptors (GPCR) arising from single coding-exon genes. Olfactory receptors share a 7-transmembrane domain structure with many neurotransmitter and hormone receptors and are responsible for the recognition and G protein-mediated transduction of odorant signals. The olfactory receptor gene family is the largest in the genome. The nomenclature assigned to the olfactory receptor genes and proteins for this organism is independent of other organisms. Synonyms: OR10H1, Olfactory receptor OR19-27

Molecular Weight: 35254 Da

Gene ID: 26539

NCBI Accession: [NP_039228](#)

Application Details

Application Notes: Optimal working dilution should be determined by the investigator.

Restrictions: For Research Use only

Handling

Format: Liquid

Concentration: 0.25 mg/mL

Buffer: PBS containing 0.09 % (W/V) Sodium Azide as preservative

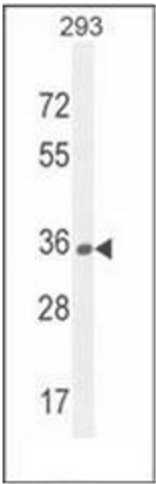
Preservative: Sodium azide

Precaution of Use: This product contains sodium azide: a POISONOUS AND HAZARDOUS SUBSTANCE which should be handled by trained staff only.

Handling Advice: Avoid repeated freezing and thawing.

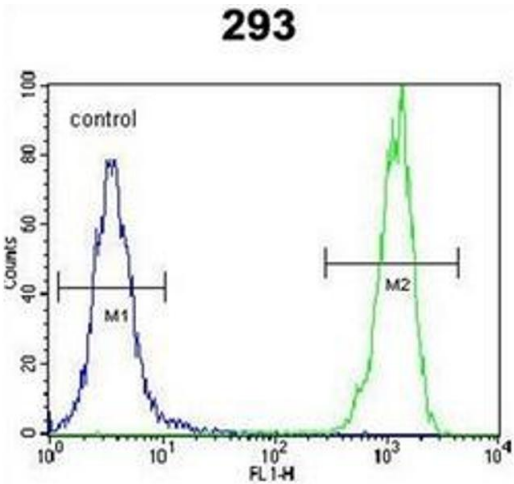
Storage: 4 °C/-20 °C

Storage Comment: Store undiluted at 2-8 °C for one month or (in aliquots) at -20 °C for longer.



Western Blotting

Image 1. Western blot analysis of OR10H1 Antibody (C-term) in 293 cell line lysates (35ug/lane). This demonstrates the OR10H1 antibody detected the OR10H1 protein (arrow).



Flow Cytometry

Image 2. Flow cytometric analysis of 293 cells using OR10H1 Antibody (C-term) Cat.-No AP53007PU-N (right histogram) compared to a negative control cell (left histogram). FITC-conjugated goat-anti-rabbit secondary antibodies were used for the analysis.