

Datasheet for ABIN953836  
**anti-OR2F2 antibody (C-Term)**

## 2 Images

[Go to Product page](#)

## Overview

Quantity:	0.4 mL
Target:	OR2F2
Binding Specificity:	AA 294-317, C-Term
Reactivity:	Human
Host:	Rabbit
Clonality:	Polyclonal
Conjugate:	This OR2F2 antibody is un-conjugated
Application:	Western Blotting (WB), Flow Cytometry (FACS), Enzyme Immunoassay (EIA)

## Product Details

Immunogen:	KLH conjugated synthetic peptide between 294-317 amino acids from the C-terminal region of Human Olfactory receptor 2F2 Genename: OR2F2
Isotype:	Ig Fraction
Specificity:	This antibody recognizes Human Olfactory receptor 2F2 (C-term).
Purification:	Protein A column, followed by peptide affinity purification

## Target Details

Target:	OR2F2
Alternative Name:	Olfactory Receptor 2F2 ( <a href="#">OR2F2 Products</a> )
Background:	Olfactory receptors interact with odorant molecules in the nose, to initiate a neuronal response

## Target Details

that triggers the perception of a smell. The olfactory receptor proteins are members of a large family of G-protein-coupled receptors (GPCR) arising from single coding-exon genes. Olfactory receptors share a 7-transmembrane domain structure with many neurotransmitter and hormone receptors and are responsible for the recognition and G protein-mediated transduction of odorant signals. The olfactory receptor gene family is the largest in the genome. The nomenclature assigned to the olfactory receptor genes and proteins for this organism is independent of other organisms. Synonyms: OR2F2, Olfactory receptor 7-1, Olfactory receptor OR7-6

Molecular Weight: 35294 Da

Gene ID: 135948

NCBI Accession: [NP\\_001004685](#)

## Application Details

Application Notes: Optimal working dilution should be determined by the investigator.

Restrictions: For Research Use only

## Handling

Format: Liquid

Concentration: 0.25 mg/mL

Buffer: PBS containing 0.09 % (W/V) Sodium Azide as preservative

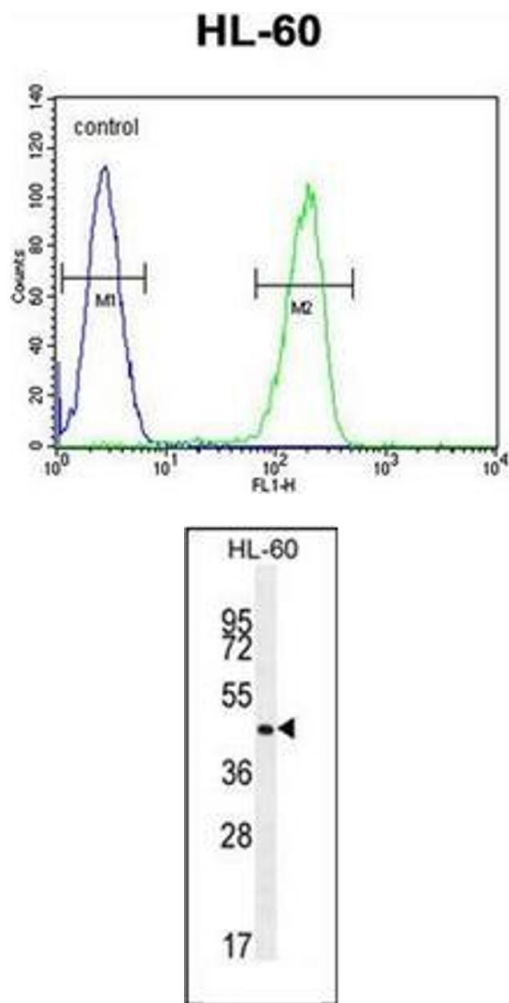
Preservative: Sodium azide

Precaution of Use: This product contains sodium azide: a POISONOUS AND HAZARDOUS SUBSTANCE which should be handled by trained staff only.

Handling Advice: Avoid repeated freezing and thawing.

Storage: 4 °C/-20 °C

Storage Comment: Store undiluted at 2-8 °C for one month or (in aliquots) at -20 °C for longer.



Flow Cytometry

**Image 1.** Flow cytometric analysis of HL-60 cells using OR2F2 Antibody (C-term) Cat.-No AP53029PU-N (right histogram) compared to a negative control cell (left histogram). FITC-conjugated goat-anti-rabbit secondary antibodies were used for the analysis.

Western Blotting

**Image 2.** Western blot analysis of OR2F2 Antibody (C-term) in HL-60 cell line lysates (35ug/lane). This demonstrates the OR2F2 antibody detected the OR2F2 protein (arrow).