

Datasheet for ABIN953846
anti-OR2W5 antibody (C-Term)[Go to Product page](#)

1 Image

Overview

Quantity:	0.4 mL
Target:	OR2W5
Binding Specificity:	AA 282-311, C-Term
Reactivity:	Human
Host:	Rabbit
Clonality:	Polyclonal
Conjugate:	This OR2W5 antibody is un-conjugated
Application:	Western Blotting (WB), Enzyme Immunoassay (EIA)

Product Details

Immunogen:	KLH conjugated synthetic peptide between 282-311 amino acids from the C-terminal region of human Olfactory receptor 2W5 Genename: OR2W5
Isotype:	Ig Fraction
Specificity:	This antibody recognizes Human Olfactory receptor 2W5 (C-term).
Purification:	Protein A column, followed by peptide affinity purification

Target Details

Target:	OR2W5
Alternative Name:	Olfactory Receptor 2W5 (OR2W5 Products)
Background:	Olfactory receptors interact with odorant molecules in the nose, to initiate a neuronal response

Target Details

that triggers the perception of a smell. The olfactory receptor proteins are members of a large family of G-protein-coupled receptors (GPCR) arising from single coding-exon genes. Olfactory receptors share a 7-transmembrane domain structure with many neurotransmitter and hormone receptors and are responsible for the recognition and G protein-mediated transduction of odorant signals. The olfactory receptor gene family is the largest in the genome. The nomenclature assigned to the olfactory receptor genes and proteins for this organism is independent of other organisms. This olfactory receptor gene has a coding sequence that is comparable in length to other olfactory receptor genes, but it should be noted that a frameshift is present in the 3' coding region that disrupts the 7-transmembrane domain structure in the protein. It is unclear if the protein can function as an olfactory receptor or if an alternate function is served. For this reason, this gene has also been interpreted to be a pseudogene. Synonyms: OR2W5, OR2W5P

Molecular Weight:	35528 Da
-------------------	----------

Gene ID:	441932
----------	--------

NCBI Accession:	NP_001004698
-----------------	------------------------------

Application Details

Application Notes:	Optimal working dilution should be determined by the investigator.
--------------------	--

Restrictions:	For Research Use only
---------------	-----------------------

Handling

Format:	Liquid
---------	--------

Concentration:	0.25 mg/mL
----------------	------------

Buffer:	PBS containing 0.09 % (W/V) Sodium Azide as preservative
---------	--

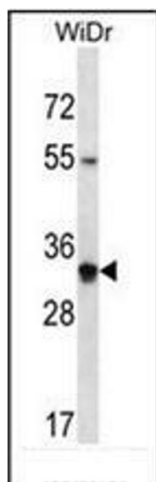
Preservative:	Sodium azide
---------------	--------------

Precaution of Use:	This product contains sodium azide: a POISONOUS AND HAZARDOUS SUBSTANCE which should be handled by trained staff only.
--------------------	--

Handling Advice:	Avoid repeated freezing and thawing.
------------------	--------------------------------------

Storage:	4 °C/-20 °C
----------	-------------

Storage Comment:	Store undiluted at 2-8 °C for one month or (in aliquots) at -20 °C for longer.
------------------	--



Western Blotting

Image 1. Western blot analysis of OR2W5 Antibody (C-term) in WiDr cell line lysates (35ug/lane). This demonstrates the OR2W5 antibody detected the OR2W5 protein (arrow).