

Datasheet for ABIN953862  
**anti-OR4L1 antibody (C-Term)**[Go to Product page](#)

## 1 Image

## Overview

Quantity:	0.4 mL
Target:	OR4L1
Binding Specificity:	AA 282-312, C-Term
Reactivity:	Human
Host:	Rabbit
Clonality:	Polyclonal
Conjugate:	This OR4L1 antibody is un-conjugated
Application:	Western Blotting (WB), Enzyme Immunoassay (EIA)

## Product Details

Immunogen:	KLH conjugated synthetic peptide between 282-312 amino acids from the C-terminal region of human Olfactory receptor 4L1 Genename: OR4L1
Isotype:	Ig Fraction
Specificity:	This antibody recognizes Human Olfactory receptor 4L1 (C-term).
Purification:	Protein A column, followed by peptide affinity purification

## Target Details

Target:	OR4L1
Alternative Name:	Olfactory Receptor 4L1 ( <a href="#">OR4L1 Products</a> )
Background:	Olfactory receptors interact with odorant molecules in the nose, to initiate a neuronal response

## Target Details

that triggers the perception of a smell. The olfactory receptor proteins are members of a large family of G-protein-coupled receptors (GPCR) arising from single coding-exon genes. Olfactory receptors share a 7-transmembrane domain structure with many neurotransmitter and hormone receptors and are responsible for the recognition and G protein-mediated transduction of odorant signals. The olfactory receptor gene family is the largest in the genome. The nomenclature assigned to the olfactory receptor genes and proteins for this organism is independent of other organisms. Synonyms: OR4L1, OR4L2P, Olfactory receptor OR14-28

Molecular Weight: 35264 Da

Gene ID: 122742

NCBI Accession: [NP\\_001004717](#)

## Application Details

Application Notes: Optimal working dilution should be determined by the investigator.

Restrictions: For Research Use only

## Handling

Format: Liquid

Concentration: 0.25 mg/mL

Buffer: PBS containing 0.09 % (W/V) Sodium Azide as preservative

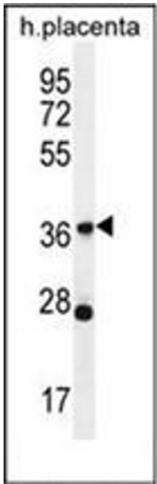
Preservative: Sodium azide

Precaution of Use: This product contains sodium azide: a POISONOUS AND HAZARDOUS SUBSTANCE which should be handled by trained staff only.

Handling Advice: Avoid repeated freezing and thawing.

Storage: 4 °C/-20 °C

Storage Comment: Store undiluted at 2-8 °C for one month or (in aliquots) at -20 °C for longer.



Western Blotting

**Image 1.** Western blot analysis of OR4L1 Antibody (C-term) in human placenta tissue lysates (35ug/lane). This demonstrates the OR4L1 antibody detected the OR4L1 protein (arrow).