

Datasheet for ABIN953882
anti-OR5F1 antibody (C-Term)[Go to Product page](#)

1 Image

Overview

| | |
|----------------------|---|
| Quantity: | 0.4 mL |
| Target: | OR5F1 |
| Binding Specificity: | AA 282-310, C-Term |
| Reactivity: | Human |
| Host: | Rabbit |
| Clonality: | Polyclonal |
| Conjugate: | This OR5F1 antibody is un-conjugated |
| Application: | Western Blotting (WB), Enzyme Immunoassay (EIA) |

Product Details

| | |
|---------------|---|
| Immunogen: | KLH conjugated synthetic peptide between 282-310 amino acids from the C-terminal region of human Olfactory receptor 5F1 Genename: OR5F1 |
| Isotype: | Ig Fraction |
| Specificity: | This antibody recognizes Human Olfactory receptor 5F1 (C-term). |
| Purification: | Protein A column, followed by peptide affinity purification |

Target Details

| | |
|-------------------|--|
| Target: | OR5F1 |
| Alternative Name: | Olfactory Receptor 5F1 (OR5F1 Products) |
| Background: | Olfactory receptors interact with odorant molecules in the nose, to initiate a neuronal response |

Target Details

that triggers the perception of a smell. The olfactory receptor proteins are members of a large family of G-protein-coupled receptors (GPCR) arising from single coding-exon genes. Olfactory receptors share a 7-transmembrane domain structure with many neurotransmitter and hormone receptors and are responsible for the recognition and G protein-mediated transduction of odorant signals. The olfactory receptor gene family is the largest in the genome. The nomenclature assigned to the olfactory receptor genes and proteins for this organism is independent of other organisms. Synonyms: OR5F1, Olfactory receptor 11-10, Olfactory receptor OR11-167

| | |
|-------------------|----------|
| Molecular Weight: | 35132 Da |
|-------------------|----------|

| | |
|----------|--------|
| Gene ID: | 338674 |
|----------|--------|

| | |
|-----------------|---------------------------|
| NCBI Accession: | NP_003688 |
|-----------------|---------------------------|

Application Details

| | |
|--------------------|--|
| Application Notes: | Optimal working dilution should be determined by the investigator. |
|--------------------|--|

| | |
|---------------|-----------------------|
| Restrictions: | For Research Use only |
|---------------|-----------------------|

Handling

| | |
|---------|--------|
| Format: | Liquid |
|---------|--------|

| | |
|----------------|------------|
| Concentration: | 0.25 mg/mL |
|----------------|------------|

| | |
|---------|--|
| Buffer: | PBS containing 0.09 % (W/V) Sodium Azide as preservative |
|---------|--|

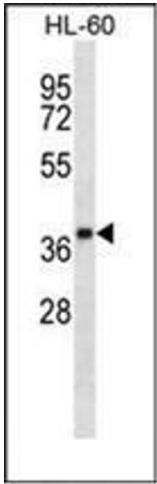
| | |
|---------------|--------------|
| Preservative: | Sodium azide |
|---------------|--------------|

| | |
|--------------------|--|
| Precaution of Use: | This product contains sodium azide: a POISONOUS AND HAZARDOUS SUBSTANCE which should be handled by trained staff only. |
|--------------------|--|

| | |
|------------------|--------------------------------------|
| Handling Advice: | Avoid repeated freezing and thawing. |
|------------------|--------------------------------------|

| | |
|----------|-------------|
| Storage: | 4 °C/-20 °C |
|----------|-------------|

| | |
|------------------|--|
| Storage Comment: | Store undiluted at 2-8 °C for one month or (in aliquots) at -20 °C for longer. |
|------------------|--|



Western Blotting

Image 1. Western blot analysis of OR5F1 Antibody