

Datasheet for ABIN953901
anti-OLFML3 antibody (Middle Region)



[Go to Product page](#)

1 Image

Overview

Quantity:	0.4 mL
Target:	OLFML3
Binding Specificity:	AA 114-143, Middle Region
Reactivity:	Human, Mouse
Host:	Rabbit
Clonality:	Polyclonal
Conjugate:	This OLFML3 antibody is un-conjugated
Application:	Western Blotting (WB), Enzyme Immunoassay (EIA)

Product Details

Immunogen:	KLH conjugated synthetic peptide between 114~143 amino acids from the Central region of Human OLFML3
Isotype:	Ig Fraction
Specificity:	This antibody recognizes Human and Mouse OLFML3 (Center).
Purification:	Saturated Ammonium Sulfate (SAS) precipitation followed by dialysis against PBS

Target Details

Target:	OLFML3
Alternative Name:	OLFML3 (OLFML3 Products)
Background:	Synonyms: HNOEL-iso, Olfactomedin-like protein 3, hOLF44

Target Details

Molecular Weight:	46010 Da
Gene ID:	56944
NCBI Accession:	NP_064575

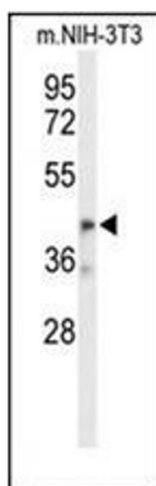
Application Details

Application Notes:	Optimal working dilution should be determined by the investigator.
Restrictions:	For Research Use only

Handling

Format:	Liquid
Concentration:	0.25 mg/mL
Buffer:	PBS containing 0.09 % (W/V) Sodium Azide as preservative
Preservative:	Sodium azide
Precaution of Use:	This product contains sodium azide: a POISONOUS AND HAZARDOUS SUBSTANCE which should be handled by trained staff only.
Handling Advice:	Avoid repeated freezing and thawing.
Storage:	4 °C/-20 °C
Storage Comment:	Store undiluted at 2-8 °C for one month or (in aliquots) at -20 °C for longer.

Images



Western Blotting

Image 1. Western blot analysis of OLFML3 Antibody (Center) in mouse NIH-3T3 cell line lysates (35ug/lane). OLFML3 (arrow) was detected using the purified Pab.