



Datasheet for ABIN953912  
**anti-OR2L13 antibody (C-Term)**



[Go to Product page](#)

2 Images

Overview

Quantity:	0.4 mL
Target:	OR2L13
Binding Specificity:	AA 251-279, C-Term
Reactivity:	Human
Host:	Rabbit
Clonality:	Polyclonal
Conjugate:	This OR2L13 antibody is un-conjugated
Application:	Western Blotting (WB), Flow Cytometry (FACS), Enzyme Immunoassay (EIA)

Product Details

Immunogen:	KLH conjugated synthetic peptide between 251-279 amino acids from the C-terminal region of human OR2L13
Isotype:	Ig Fraction
Specificity:	This antibody recognizes Human OR2L13 (C-term).
Purification:	Protein A column, followed by peptide affinity purification

Target Details

Target:	OR2L13
Alternative Name:	OR2L13 ( <a href="#">OR2L13 Products</a> )
Background:	Olfactory receptors interact with odorant molecules in the nose, to initiate a neuronal response

## Target Details

---

that triggers the perception of a smell. The olfactory receptor proteins are members of a large family of G-protein-coupled receptors (GPCR) arising from single coding-exon genes. Olfactory receptors share a 7-transmembrane domain structure with many neurotransmitter and hormone receptors and are responsible for the recognition and G protein-mediated transduction of odorant signals. The olfactory receptor gene family is the largest in the genome. The nomenclature assigned to the olfactory receptor genes and proteins for this organism is independent of other organisms. Synonyms: OR2L14, Olfactory receptor 2L13, Olfactory receptor 2L14

---

Molecular Weight: 35634 Da

---

Gene ID: 284521

---

NCBI Accession: [NP\\_787107](#)

## Application Details

---

---

Application Notes: Optimal working dilution should be determined by the investigator.

---

Restrictions: For Research Use only

## Handling

---

---

Format: Liquid

---

Concentration: 0.25 mg/mL

---

Buffer: PBS containing 0.09 % (W/V) Sodium Azide as preservative

---

Preservative: Sodium azide

---

Precaution of Use: This product contains sodium azide: a POISONOUS AND HAZARDOUS SUBSTANCE which should be handled by trained staff only.

---

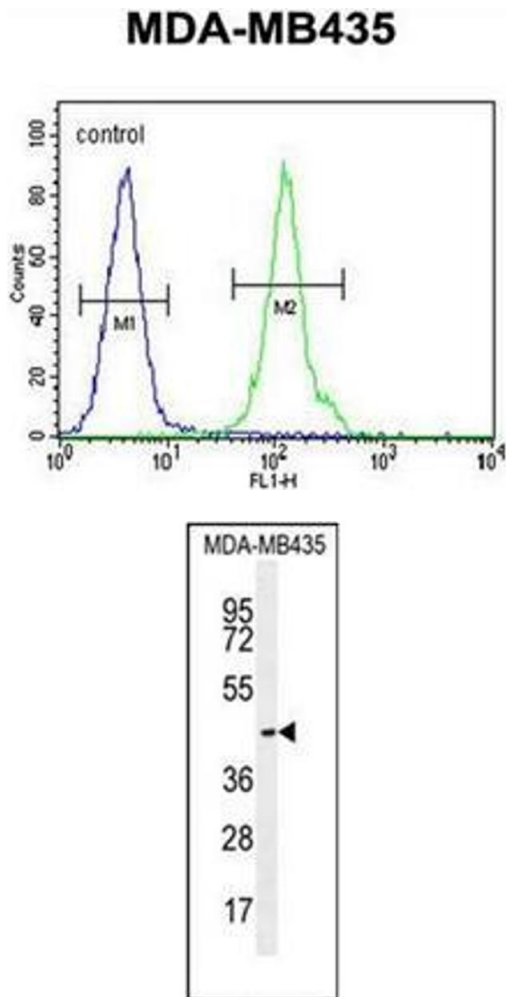
Handling Advice: Avoid repeated freezing and thawing.

---

Storage: 4 °C/-20 °C

---

Storage Comment: Store undiluted at 2-8 °C for one month or (in aliquots) at -20 °C for longer.



### Flow Cytometry

**Image 1.** Flow cytometric analysis of MDA-MB435 cells using OR2L13 Antibody (C-term) Cat.-No AP53032PU-N (right histogram) compared to a negative control cell (left histogram). FITC-conjugated goat-anti-rabbit secondary antibodies were used for the analysis.

### Western Blotting

**Image 2.** Western blot analysis of OR2L13 Antibody (C-term) in MDA-MB435 cell line lysates (35ug/lane). This demonstrates the OR2L13 antibody detected the OR2L13 protein (arrow).