



Datasheet for ABIN953931
anti-ORAI1 antibody (Middle Region)



[Go to Product page](#)

2 Images

Overview

Quantity:	0.4 mL
Target:	ORAI1
Binding Specificity:	AA 152-181, Middle Region
Reactivity:	Human, Mouse
Host:	Rabbit
Clonality:	Polyclonal
Conjugate:	This ORAI1 antibody is un-conjugated
Application:	Western Blotting (WB), Immunohistochemistry (Paraffin-embedded Sections) (IHC (p)), Enzyme Immunoassay (EIA)

Product Details

Immunogen:	KLH conjugated synthetic peptide between 152~181 amino acids from the Center region of human ORAI1
Isotype:	Ig Fraction
Specificity:	This antibody recognizes Human and Mouse ORAI1 (Center).
Purification:	Protein A column, followed by peptide affinity purification

Target Details

Target:	ORAI1
Alternative Name:	ORAI1 (ORAI1 Products)

Target Details

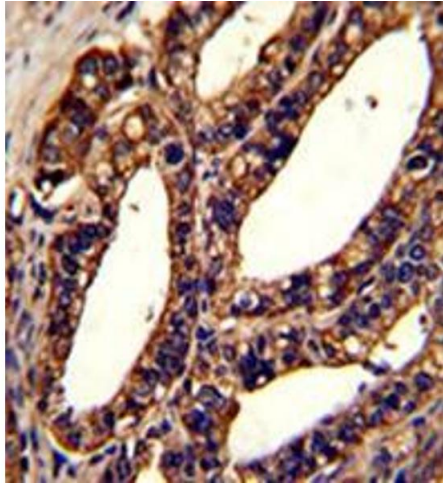
Background:	ORAI1 is a plasma membrane protein essential for store-operated calcium entry.Synonyms: CRACM1, Calcium release-activated calcium channel protein 1, ORAI-1, Protein orai-1, TMEM142A, Transmembrane protein 142A
Molecular Weight:	32668 Da
Gene ID:	84876
NCBI Accession:	NP_116179
Pathways:	TCR Signaling , BCR Signaling

Application Details

Application Notes:	Optimal working dilution should be determined by the investigator.
Restrictions:	For Research Use only

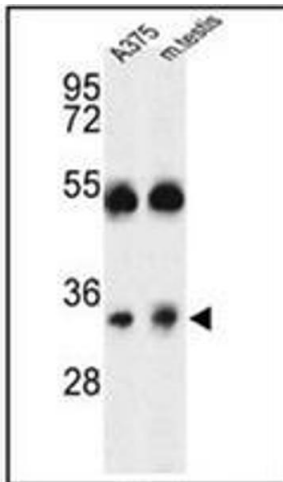
Handling

Format:	Liquid
Concentration:	0.25 mg/mL
Buffer:	PBS containing 0.09 % (W/V) Sodium Azide as preservative
Preservative:	Sodium azide
Precaution of Use:	This product contains sodium azide: a POISONOUS AND HAZARDOUS SUBSTANCE which should be handled by trained staff only.
Handling Advice:	Avoid repeated freezing and thawing.
Storage:	4 °C/-20 °C
Storage Comment:	Store undiluted at 2-8 °C for one month or (in aliquots) at -20 °C for longer.



Immunohistochemistry (Paraffin-embedded Sections)

Image 1. Formalin-fixed and paraffin-embedded human prostate carcinoma reacted with ORAI1 Antibody (Center) followed which was peroxidase-conjugated to the secondary antibody, followed by DAB staining. This data demonstrates the use of this antibody for immunohistochemistry; clinical relevance has not been evaluated.



Western Blotting

Image 2. Western blot analysis of ORAI1 Antibody (Center) in A375 cell line and mouse testis tissue lysates (35ug/lane). ORAI1 (arrow) was detected using the purified Pab.