

Datasheet for ABIN953934  
**anti-ORC3 antibody (N-Term)**[Go to Product page](#)

## 2 Images

## Overview

Quantity:	0.4 mL
Target:	ORC3
Binding Specificity:	AA 16-46, N-Term
Reactivity:	Human
Host:	Rabbit
Clonality:	Polyclonal
Conjugate:	This ORC3 antibody is un-conjugated
Application:	Western Blotting (WB), Immunohistochemistry (Paraffin-embedded Sections) (IHC (p)), Enzyme Immunoassay (EIA)

## Product Details

Immunogen:	KLH conjugated synthetic peptide between 16-46 amino acids from the N-terminal region of human ORC3 / LATHEO Genename: ORC3L
Isotype:	Ig Fraction
Specificity:	This antibody recognizes Human ORC3 / LATHEO (N-term).
Purification:	Protein A column, followed by peptide affinity purification

## Target Details

Target:	ORC3
Alternative Name:	ORC3 / LATHEO ( <a href="#">ORC3 Products</a> )

## Target Details

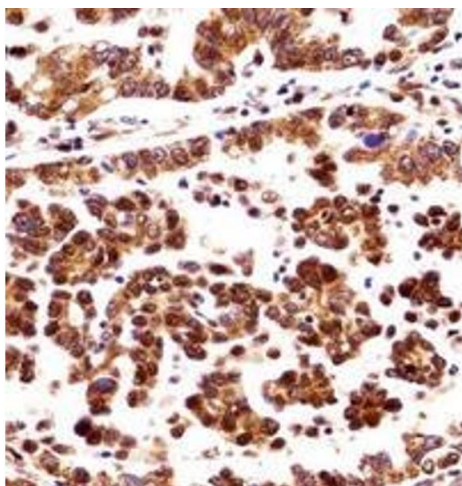
Background:	<p>The origin recognition complex (ORC) is a highly conserved six subunits protein complex essential for the initiation of the DNA replication in eukaryotic cells. Studies in yeast demonstrated that ORC binds specifically to origins of replication and serves as a platform for the assembly of additional initiation factors such as Cdc6 and Mcm proteins. The protein encoded by this gene is a subunit of the ORC complex. Studies of a similar gene in Drosophila suggested a possible role of this protein in neuronal proliferation and olfactory memory. Alternatively spliced transcript variants encoding distinct isoforms have been reported for this gene. Synonyms: ORC3L, Origin recognition complex subunit 3, Origin recognition complex subunit Latheo</p>
Molecular Weight:	82254 Da
Gene ID:	23595
NCBI Accession:	<a href="#">NP_036513</a>
Pathways:	<a href="#">Mitotic G1-G1/S Phases</a> , <a href="#">DNA Replication</a> , <a href="#">Feeding Behaviour</a> , <a href="#">Synthesis of DNA</a>

## Application Details

Application Notes:	Optimal working dilution should be determined by the investigator.
Restrictions:	For Research Use only

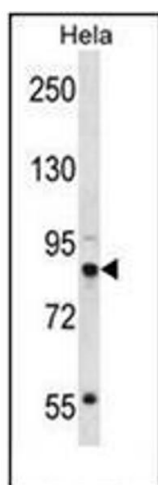
## Handling

Format:	Liquid
Concentration:	0.25 mg/mL
Buffer:	PBS containing 0.09 % (W/V) Sodium Azide as preservative
Preservative:	Sodium azide
Precaution of Use:	This product contains sodium azide: a POISONOUS AND HAZARDOUS SUBSTANCE which should be handled by trained staff only.
Handling Advice:	Avoid repeated freezing and thawing.
Storage:	4 °C/-20 °C
Storage Comment:	Store undiluted at 2-8 °C for one month or (in aliquots) at -20 °C for longer.



#### Immunohistochemistry (Paraffin-embedded Sections)

**Image 1.** Immunohistochemistry analysis in formalin fixed and paraffin embedded human lung adenocarcinoma reacted with ORC3 / LATHEO Antibody (N-term) followed which was peroxidase conjugated to the secondary antibody and followed by DAB staining. This data demonstrates the use of ORC3L Antibody (N-term) for immunohistochemistry. Clinical relevance has not been evaluated.



#### Western Blotting

**Image 2.** Western blot analysis of ORC3 / LATHEO Antibody (N-term) in HeLa cell line lysates (35ug/lane). This demonstrates the ORC3L antibody detected the ORC3L protein (arrow).