

Datasheet for ABIN953938

anti-ORMDL2 antibody (Middle Region)[Go to Product page](#)**2** Images

Overview

Quantity:	0.4 mL
Target:	ORMDL2
Binding Specificity:	AA 56-85, Middle Region
Reactivity:	Human, Mouse
Host:	Rabbit
Clonality:	Polyclonal
Conjugate:	This ORMDL2 antibody is un-conjugated
Application:	Western Blotting (WB), Immunohistochemistry (Paraffin-embedded Sections) (IHC (p)), Enzyme Immunoassay (EIA)

Product Details

Immunogen:	KLH conjugated synthetic peptide between 56-85 amino acids from the Central region of human ORM1-like protein 2 Genename: ORMDL2
Isotype:	Ig Fraction
Specificity:	This antibody recognizes Human and Mouse ORM1-like protein 2 (Center).
Purification:	Protein A column, followed by peptide affinity purification

Target Details

Target:	ORMDL2
Alternative Name:	ORM1-Like Protein 2 (ORMDL2 Products)

Target Details

Background:	Negative regulator of sphingolipid synthesis.Synonyms: HSPC160, MSTP095, ORMDL2
Molecular Weight:	17363 Da
Gene ID:	29095
NCBI Accession:	NP_054901

Application Details

Application Notes:	Optimal working dilution should be determined by the investigator.
Restrictions:	For Research Use only

Handling

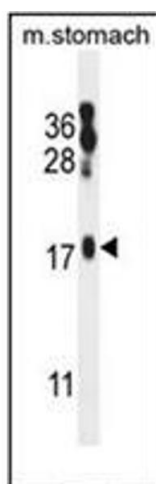
Format:	Liquid
Concentration:	0.25 mg/mL
Buffer:	PBS containing 0.09 % (W/V) Sodium Azide as preservative
Preservative:	Sodium azide
Precaution of Use:	This product contains sodium azide: a POISONOUS AND HAZARDOUS SUBSTANCE which should be handled by trained staff only.
Handling Advice:	Avoid repeated freezing and thawing.
Storage:	4 °C/-20 °C
Storage Comment:	Store undiluted at 2-8 °C for one month or (in aliquots) at -20 °C for longer.

Images



Immunohistochemistry (Paraffin-embedded Sections)

Image 1. Immunohistochemistry analysis in formalin fixed and paraffin embedded human skeletal muscle reacted with ORMDL2 Antibody (Center) Cat.-No AP53121PU-N peroxidase conjugated to the secondary antibody and followed by DAB staining. This data demonstrates the use of the ORMDL2 Antibody (Center) for immunohistochemistry. Clinical relevance has not been evaluated.



Western Blotting

Image 2. Western blot analysis of ORMDL2 Antibody (Center) in mouse stomach tissue lysates (35ug/lane). This demonstrates the ORML2 antibody detected the ORMDL2 protein (arrow).