

Datasheet for ABIN953939

anti-ORMDL3 antibody (Middle Region)[Go to Product page](#)**1** Image

Overview

Quantity:	0.4 mL
Target:	ORMDL3
Binding Specificity:	AA 56-85, Middle Region
Reactivity:	Human, Mouse
Host:	Rabbit
Clonality:	Polyclonal
Conjugate:	This ORMDL3 antibody is un-conjugated
Application:	Western Blotting (WB), Enzyme Immunoassay (EIA)

Product Details

Immunogen:	KLH conjugated synthetic peptide between 56-85 amino acids from the Central region of human ORM1-like protein Genename: ORMDL3
Isotype:	Ig Fraction
Specificity:	This antibody recognizes Human and Mouse ORM1-like protein 3 (Center).
Purification:	Protein A column, followed by peptide affinity purification

Target Details

Target:	ORMDL3
Alternative Name:	ORM1-Like Protein 3 (ORMDL3 Products)
Background:	Negative regulator of sphingolipid synthesis. May indirectly regulate endoplasmic reticulum-

Target Details

	mediated Ca ²⁺ signaling.Synonyms: ORMDL3
Molecular Weight:	17495 Da
Gene ID:	94103
NCBI Accession:	NP_644809

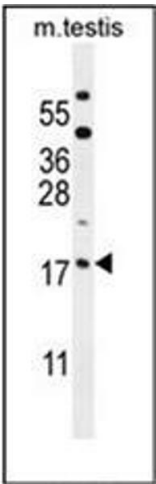
Application Details

Application Notes:	Optimal working dilution should be determined by the investigator.
Restrictions:	For Research Use only

Handling

Format:	Liquid
Concentration:	0.25 mg/mL
Buffer:	PBS containing 0.09 % (W/V) Sodium Azide as preservative
Preservative:	Sodium azide
Precaution of Use:	This product contains sodium azide: a POISONOUS AND HAZARDOUS SUBSTANCE which should be handled by trained staff only.
Handling Advice:	Avoid repeated freezing and thawing.
Storage:	4 °C/-20 °C
Storage Comment:	Store undiluted at 2-8 °C for one month or (in aliquots) at -20 °C for longer.

Images



Western Blotting

Image 1. Western blot analysis of ORMDL3 Antibody (Center) in mouse testis tissue lysates (35ug/lane). This demonstrates the ORMDL3 antibody detected the ORMDL3 protein (arrow).