

Datasheet for ABIN953942

anti-OSBPL1A antibody (C-Term)[Go to Product page](#)**1** Image

Overview

Quantity:	0.4 mL
Target:	OSBPL1A
Binding Specificity:	AA 734-763, C-Term
Reactivity:	Human
Host:	Rabbit
Clonality:	Polyclonal
Conjugate:	This OSBPL1A antibody is un-conjugated
Application:	Western Blotting (WB), Enzyme Immunoassay (EIA)

Product Details

Immunogen:	KLH conjugated synthetic peptide between 734-763 amino acids from the C-terminal region of Human OSBPL1A
Isotype:	Ig Fraction
Specificity:	This antibody recognizes Human OSBPL1A (C-term).
Purification:	Protein A column, followed by peptide affinity purification

Target Details

Target:	OSBPL1A
Alternative Name:	OSBPL1A (OSBPL1A Products)
Background:	This gene encodes a member of the oxysterol-binding protein (OSBP) family, a group of

Target Details

intracellular lipid receptors. Most members contain an N-terminal pleckstrin homology domain and a highly conserved C-terminal OSBP-like sterol-binding domain, although some members contain only the sterol-binding domain. Transcript variants derived from alternative promoter usage and/or alternative splicing exist, they encode different isoforms. Synonyms: ORP-1, ORP1, OSBP-related protein 1, OSBP8, OSBPL1, OSBPL1B, Oxysterol-binding protein-related protein 1

Molecular Weight: 108470 Da

Gene ID: 114876

NCBI Accession: [NP_060500](#)

Application Details

Application Notes: Optimal working dilution should be determined by the investigator.

Restrictions: For Research Use only

Handling

Format: Liquid

Concentration: 0.25 mg/mL

Buffer: PBS containing 0.09 % (W/V) Sodium Azide as preservative

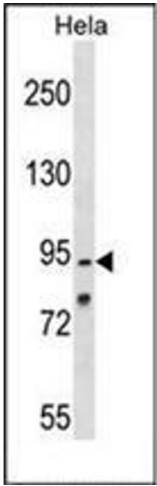
Preservative: Sodium azide

Precaution of Use: This product contains sodium azide: a POISONOUS AND HAZARDOUS SUBSTANCE which should be handled by trained staff only.

Handling Advice: Avoid repeated freezing and thawing.

Storage: 4 °C/-20 °C

Storage Comment: Store undiluted at 2-8 °C for one month or (in aliquots) at -20 °C for longer.



Western Blotting

Image 1. Western blot analysis of OSBPL1A Antibody (C-term) in HeLa cell line lysates (35ug/lane). This demonstrates the OSBPL1A antibody detected the OSBPL1A protein (arrow