



[Go to Product page](#)

Datasheet for ABIN953949

anti-Otopetrin 1 antibody (Middle Region)

2 Images

Overview

Quantity:	0.4 mL
Target:	Otopetrin 1 (OTOP1)
Binding Specificity:	AA 367-396, Middle Region
Reactivity:	Mouse, Human
Host:	Rabbit
Clonality:	Polyclonal
Conjugate:	This Otopetrin 1 antibody is un-conjugated
Application:	Western Blotting (WB), Immunohistochemistry (Paraffin-embedded Sections) (IHC (p)), Enzyme Immunoassay (EIA)

Product Details

Immunogen:	KLH conjugated synthetic peptide between 367-396 amino acids from the Central region of Human Otopetrin-1 Genename: OTOP1
Isotype:	Ig Fraction
Specificity:	This antibody recognizes Human and Mouse Otopetrin-1 (Center).
Purification:	Protein A column, followed by peptide affinity purification

Target Details

Target:	Otopetrin 1 (OTOP1)
Alternative Name:	Otopetrin-1 (OTOP1 Products)

Target Details

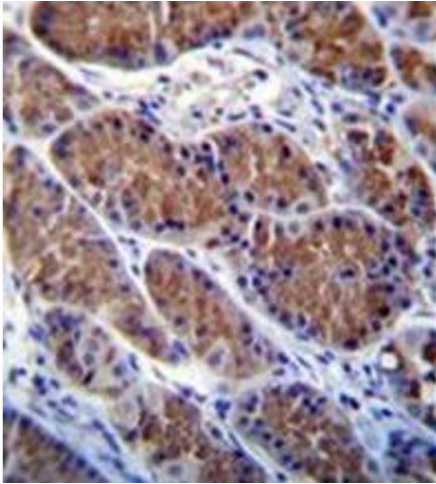
Background:	OTOP1 is required for normal formation of otoconia in the inner ear. Inhibits P2Y purinoceptors. Modulates calcium homeostasis and influx of calcium in response to extracellular ATP (By similarity).Synonyms: OTOP1
Molecular Weight:	67353 Da
Gene ID:	133060
NCBI Accession:	NP_819056

Application Details

Application Notes:	Optimal working dilution should be determined by the investigator.
Restrictions:	For Research Use only

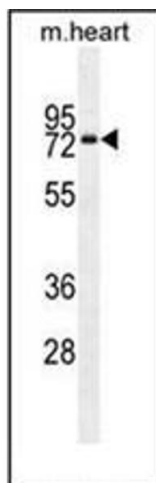
Handling

Format:	Liquid
Concentration:	0.25 mg/mL
Buffer:	PBS containing 0.09 % (W/V) Sodium Azide as preservative
Preservative:	Sodium azide
Precaution of Use:	This product contains sodium azide: a POISONOUS AND HAZARDOUS SUBSTANCE which should be handled by trained staff only.
Handling Advice:	Avoid repeated freezing and thawing.
Storage:	4 °C/-20 °C
Storage Comment:	Store undiluted at 2-8 °C for one month or (in aliquots) at -20 °C for longer.



Immunohistochemistry (Paraffin-embedded Sections)

Image 1. Immunohistochemistry analysis in formalin fixed and paraffin embedded human stomach tissue reacted with Otopetrin-1 Antibody (Center) followed which was peroxidase conjugated to the secondary antibody and followed by DAB staining. This data demonstrates the use of OTOP1 Antibody (Center) for immunohistochemistry. Clinical relevance has not been evaluated.



Western Blotting

Image 2. Western blot analysis of Otopetrin-1 Antibody (Center) in mouse heart tissue lysates (35ug/lane). This demonstrates the OTOP1 antibody detected the OTOP1 protein (arrow).