

Datasheet for ABIN953952
anti-OTUD1 antibody (Middle Region)[Go to Product page](#)

2 Images

Overview

Quantity:	0.4 mL
Target:	OTUD1
Binding Specificity:	AA 289-318, Middle Region
Reactivity:	Human
Host:	Rabbit
Clonality:	Polyclonal
Conjugate:	This OTUD1 antibody is un-conjugated
Application:	Western Blotting (WB), Immunohistochemistry (Paraffin-embedded Sections) (IHC (p)), Enzyme Immunoassay (EIA)

Product Details

Immunogen:	KLH conjugated synthetic peptide between 289-318 amino acids from the Central region of human OTUD1
Isotype:	Ig Fraction
Specificity:	This antibody recognizes Human OTUD1 (Center).
Purification:	Protein A column, followed by peptide affinity purification

Target Details

Target:	OTUD1
Alternative Name:	OTUD1 (OTUD1 Products)

Target Details

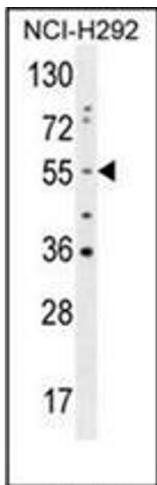
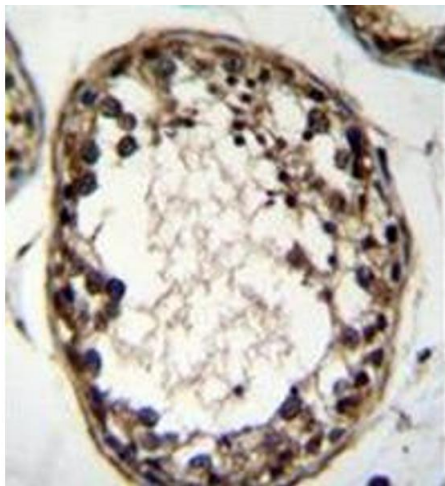
Background:	Deubiquitinating enzymes (DUBs, see MIM 603478) are proteases that specifically cleave ubiquitin (MIM 191339) linkages, negating the action of ubiquitin ligases. DUBA7 belongs to a DUB subfamily characterized by an ovarian tumor (OTU) domain.[supplied by OMIM].Synonyms: DUBA7, OTDC1, OTU domain-containing protein 1
Molecular Weight:	51063 Da
Gene ID:	220213
NCBI Accession:	NP_001138845

Application Details

Application Notes:	Optimal working dilution should be determined by the investigator.
Restrictions:	For Research Use only

Handling

Format:	Liquid
Concentration:	0.25 mg/mL
Buffer:	PBS containing 0.09 % (W/V) Sodium Azide as preservative
Preservative:	Sodium azide
Precaution of Use:	This product contains sodium azide: a POISONOUS AND HAZARDOUS SUBSTANCE which should be handled by trained staff only.
Handling Advice:	Avoid repeated freezing and thawing.
Storage:	4 °C/-20 °C
Storage Comment:	Store undiluted at 2-8 °C for one month or (in aliquots) at -20 °C for longer.



Immunohistochemistry (Paraffin-embedded Sections)

Image 1. Immunohistochemistry analysis in formalin fixed and paraffin embedded human testis tissue reacted with OTUD1 Antibody (Center) followed which was peroxidase conjugated to the secondary antibody and followed by DAB staining. This data demonstrates the use of OTUD1 Antibody (Center) for immunohistochemistry. Clinical relevance has not been evaluated.

Western Blotting

Image 2. Western blot analysis of OTUD1 Antibody (Center) in NCI-H292 cell line lysates (35ug/lane). This demonstrates the OTUD1 antibody detected the OTUD1 protein (arrow).