

Datasheet for ABIN953967  
**anti-P2RY2 antibody (C-Term)**



[Go to Product page](#)

1 Image

## Overview

Quantity:	0.4 mL
Target:	P2RY2
Binding Specificity:	AA 323-352, C-Term
Reactivity:	Human
Host:	Rabbit
Clonality:	Polyclonal
Conjugate:	This P2RY2 antibody is un-conjugated
Application:	Western Blotting (WB), Enzyme Immunoassay (EIA)

## Product Details

Immunogen:	KLH conjugated synthetic peptide between 323-352 amino acids from the C-terminal region of human P2RY2 / P2Y2
Isotype:	Ig Fraction
Specificity:	This antibody recognizes Human P2RY2 / P2Y2 (C-term).
Purification:	Protein A column, followed by peptide affinity purification

## Target Details

Target:	P2RY2
Alternative Name:	P2RY2 / P2Y2 ( <a href="#">P2RY2 Products</a> )
Background:	The product of this gene belongs to the family of G-protein coupled receptors. This family has

## Target Details

several receptor subtypes with different pharmacological selectivity, which overlaps in some cases, for various adenosine and uridine nucleotides. This receptor is responsive to both adenosine and uridine nucleotides. It may participate in control of the cell cycle of endometrial carcinoma cells. Three transcript variants encoding the same protein have been identified for this gene. Synonyms: ATP receptor, P2RU1, P2U purinoceptor 1, P2U1, P2Y purinoceptor 2, Purinergic receptor

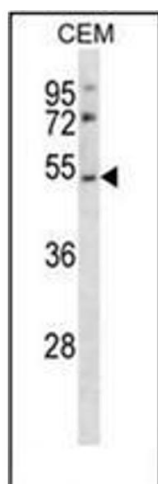
Molecular Weight:	42273 Da
Gene ID:	5029
NCBI Accession:	<a href="#">NP_002555</a>
Pathways:	<a href="#">Cellular Response to Molecule of Bacterial Origin</a> , <a href="#">Smooth Muscle Cell Migration</a>

## Application Details

Application Notes:	Optimal working dilution should be determined by the investigator.
Restrictions:	For Research Use only

## Handling

Format:	Liquid
Concentration:	0.25 mg/mL
Buffer:	PBS containing 0.09 % (W/V) Sodium Azide as preservative
Preservative:	Sodium azide
Precaution of Use:	This product contains sodium azide: a POISONOUS AND HAZARDOUS SUBSTANCE which should be handled by trained staff only.
Handling Advice:	Avoid repeated freezing and thawing.
Storage:	4 °C/-20 °C
Storage Comment:	Store undiluted at 2-8 °C for one month or (in aliquots) at -20 °C for longer.



#### Western Blotting

**Image 1.** Western blot analysis of P2RY2 / P2Y2 Antibody (C-term) in CEM cell line lysates (35ug/lane). This demonstrates the P2RY2 antibody detected the P2RY2 protein (arrow).