

Datasheet for ABIN953972
anti-POU5F1B antibody (C-Term)

2 Images

[Go to Product page](#)

Overview

Quantity:	0.4 mL
Target:	POU5F1B
Binding Specificity:	AA 217-247, C-Term
Reactivity:	Human
Host:	Rabbit
Clonality:	Polyclonal
Conjugate:	This POU5F1B antibody is un-conjugated
Application:	Western Blotting (WB), Flow Cytometry (FACS), Enzyme Immunoassay (EIA)

Product Details

Immunogen:	KLH conjugated synthetic peptide between 217-247 amino acids from the C-terminal region of human P5F1B Genename: POU5F1B
Isotype:	Ig Fraction
Specificity:	This antibody recognizes Human P5F1B (C-term).
Purification:	Protein A column, followed by peptide affinity purification

Target Details

Target:	POU5F1B
Abstract:	POU5F1B Products
Background:	This intronless gene was thought to be a transcribed pseudogene of POU class 5 homeobox 1,

Target Details

however, it has been reported that this gene can encode a functional protein. The encoded protein is nearly the same length as and highly similar to the POU class 5 homeobox 1 transcription factor, has been shown to be a weak transcriptional activator and may play a role in carcinogenesis and eye development. Synonyms: OTF3C, OTF3P1, POU5F1B, POU5F1P1, POU5FLC20, POU5FLC8, Putative POU domain, class 5, transcription factor 1B

Molecular Weight: 38570 Da

Gene ID: 5462

NCBI Accession: [NP_001153014](#)

Application Details

Application Notes: Optimal working dilution should be determined by the investigator.

Restrictions: For Research Use only

Handling

Format: Liquid

Concentration: 0.25 mg/mL

Buffer: PBS containing 0.09 % (W/V) Sodium Azide as preservative

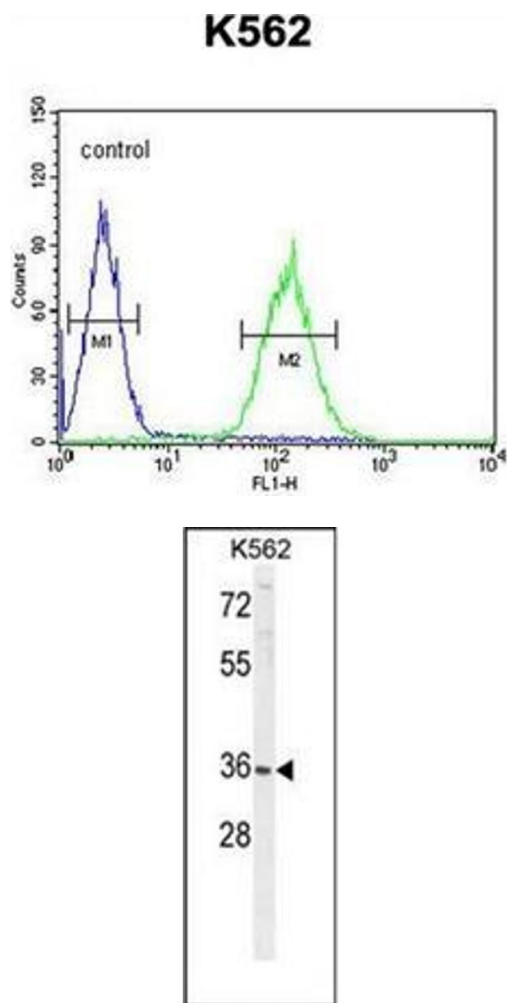
Preservative: Sodium azide

Precaution of Use: This product contains sodium azide: a POISONOUS AND HAZARDOUS SUBSTANCE which should be handled by trained staff only.

Handling Advice: Avoid repeated freezing and thawing.

Storage: 4 °C/-20 °C

Storage Comment: Store undiluted at 2-8 °C for one month or (in aliquots) at -20 °C for longer.



Flow Cytometry

Image 1. Flow cytometric analysis of K562 cells using P5F1B Antibody (C-term) Cat.-No AP53146PU-N (right histogram) compared to a negative control cell (left histogram). FITC-conjugated goat-anti-rabbit secondary antibodies were used for the analysis.

Western Blotting

Image 2. Western blot analysis of P5F1B Antibody (C-term) in K562 cell line lysates (35ug/lane). This demonstrates the P5F1B antibody detected the P5F1B protein (arrow).