

Datasheet for ABIN953980
anti-PAK6 antibody (Middle Region)

3 Images

[Go to Product page](#)

Overview

Quantity:	0.4 mL
Target:	PAK6
Binding Specificity:	AA 275-305, Middle Region
Reactivity:	Human
Host:	Rabbit
Clonality:	Polyclonal
Conjugate:	This PAK6 antibody is un-conjugated
Application:	Western Blotting (WB), Immunohistochemistry (Paraffin-embedded Sections) (IHC (p)), Immunofluorescence (IF), Enzyme Immunoassay (EIA)

Product Details

Immunogen:	KLH conjugated synthetic peptide between 275-305 amino acids from the Central region of human PAK6
Isotype:	Ig Fraction
Specificity:	This antibody recognizes Human PAK6 (Center).
Purification:	Protein A column, followed by peptide affinity purification

Target Details

Target:	PAK6
Alternative Name:	PAK6 (PAK6 Products)

Target Details

Background:	<p>This gene encodes a member of the p21-activated kinase (PAK) family. The proteins of this family are Rac/Cdc42-associated Ste20-like Ser/Thr protein kinases, characterized by a highly conserved amino-terminal Cdc42/Rac interactive binding (CRIB) domain and a carboxyl-terminal kinase domain. PAK kinases are implicated in the regulation of a number of cellular processes, including cytoskeleton rearrangement, apoptosis and the MAP kinase signaling pathway. The protein encoded by this gene was found to interact with androgen receptor (AR), which is a steroid hormone-dependent transcription factor that is important for male sexual differentiation and development. This gene was found to be highly expressed in testis and prostate tissues and the encoded protein was shown to cotranslocate into the nucleus with AR in response to androgen. Alternatively spliced transcript variants encoding the same protein have been found for this gene. [provided by RefSeq]. Synonyms: PAK-5, PAK-6, PAK5, Serine/threonine-protein kinase PAK 6, p21-activated kinase 6</p>
-------------	---

Molecular Weight:	74869 Da
-------------------	----------

Gene ID:	56924
----------	-------

NCBI Accession:	NP_001122100
-----------------	------------------------------

Application Details

Application Notes:	Optimal working dilution should be determined by the investigator.
--------------------	--

Restrictions:	For Research Use only
---------------	-----------------------

Handling

Format:	Liquid
---------	--------

Concentration:	0.25 mg/mL
----------------	------------

Buffer:	PBS containing 0.09 % (W/V) Sodium Azide as preservative
---------	--

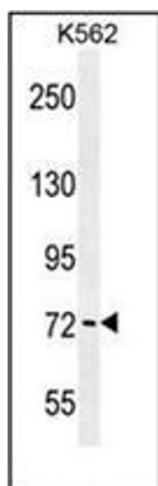
Preservative:	Sodium azide
---------------	--------------

Precaution of Use:	This product contains sodium azide: a POISONOUS AND HAZARDOUS SUBSTANCE which should be handled by trained staff only.
--------------------	--

Handling Advice:	Avoid repeated freezing and thawing.
------------------	--------------------------------------

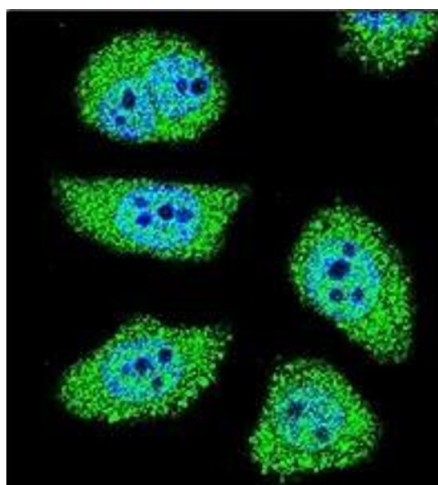
Storage:	4 °C/-20 °C
----------	-------------

Storage Comment:	Store undiluted at 2-8 °C for one month or (in aliquots) at -20 °C for longer.
------------------	--



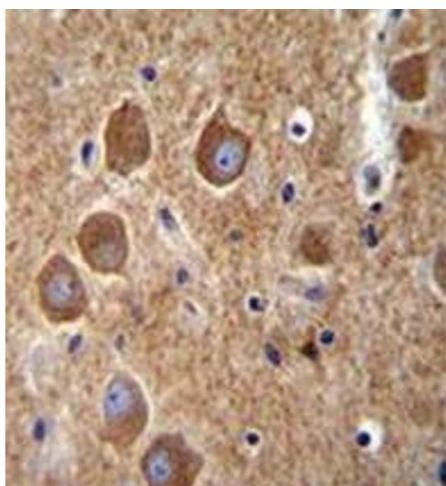
Western Blotting

Image 1. Western blot analysis of PAK6 Antibody (Center) in K562 cell line lysates (35ug/lane). This demonstrates the PAK6 antibody detected the PAK6 protein (arrow).



Immunofluorescence

Image 2. Confocal immunofluorescent analysis of PAK6 Antibody (Center) Cat.-No AP53154PU-N with U-251MG cell followed by Alexa Fluor 488-conjugated goat anti-rabbit IgG (green). DAPI was used to stain the cell nuclear (blue).



Immunohistochemistry (Paraffin-embedded Sections)

Image 3. Immunohistochemistry analysis in formalin fixed and paraffin embedded human brain tissue reacted with AP53154PU-N, which was peroxidase conjugated to the secondary antibody and followed by DAB staining. This data demonstrates the use of PAK6 Antibody (Center) for immunohistochemistry. Clinical relevance has not been evaluated.