

Datasheet for ABIN953981  
**anti-PALB2 antibody (Middle Region)**[Go to Product page](#)

## 2 Images

## Overview

Quantity:	0.4 mL
Target:	PALB2
Binding Specificity:	AA 553-582, Middle Region
Reactivity:	Human
Host:	Rabbit
Clonality:	Polyclonal
Conjugate:	This PALB2 antibody is un-conjugated
Application:	Western Blotting (WB), Flow Cytometry (FACS), Enzyme Immunoassay (EIA)

## Product Details

Immunogen:	KLH conjugated synthetic peptide between 553-582 amino acids from the Central region of human PALB2
Isotype:	Ig Fraction
Specificity:	This antibody recognizes Human PALB2 (Center).
Purification:	Protein A column, followed by peptide affinity purification

## Target Details

Target:	PALB2
Alternative Name:	PALB2 ( <a href="#">PALB2 Products</a> )
Background:	This gene encodes a protein that may function in tumor suppression. This protein binds to and

## Target Details

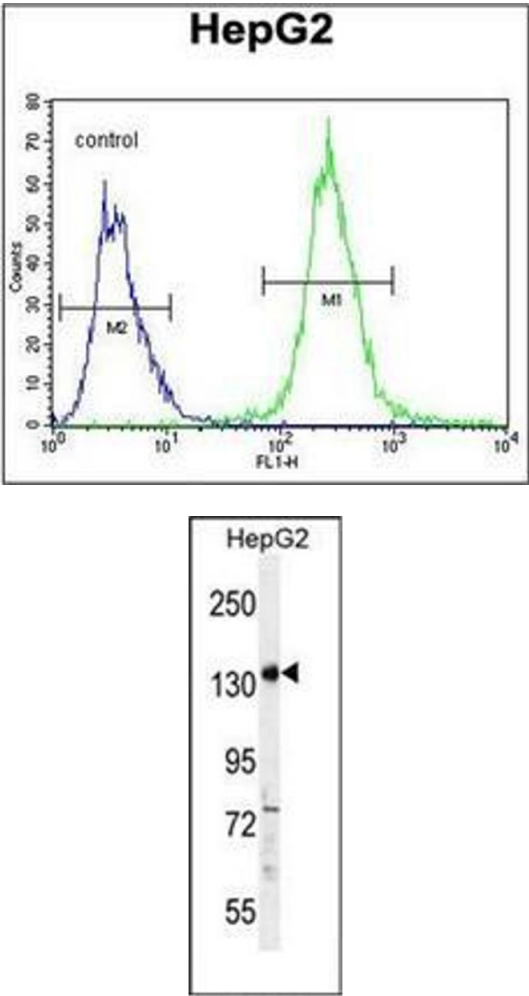
	colocalizes with the breast cancer 2 early onset protein (BRCA2) in nuclear foci and likely permits the stable intranuclear localization and accumulation of BRCA2.Synonyms: FANCN, Partner and localizer of BRCA2
Molecular Weight:	131295 Da
Gene ID:	79728
NCBI Accession:	<a href="#">NP_078951</a>
Pathways:	<a href="#">DNA Damage Repair</a>

## Application Details

Application Notes:	Optimal working dilution should be determined by the investigator.
Restrictions:	For Research Use only

## Handling

Format:	Liquid
Concentration:	0.25 mg/mL
Buffer:	PBS containing 0.09 % (W/V) Sodium Azide as preservative
Preservative:	Sodium azide
Precaution of Use:	This product contains sodium azide: a POISONOUS AND HAZARDOUS SUBSTANCE which should be handled by trained staff only.
Handling Advice:	Avoid repeated freezing and thawing.
Storage:	4 °C/-20 °C
Storage Comment:	Store undiluted at 2-8 °C for one month or (in aliquots) at -20 °C for longer.



Flow Cytometry

**Image 1.** Flow cytometric analysis of HepG2 cells using PALB2 Antibody (Center) Cat.-No AP53155PU-N (right histogram) compared to a negative control cell (left histogram). FITC-conjugated goat-anti-rabbit secondary antibodies were used for the analysis

Western Blotting

**Image 2.** Western blot analysis of PALB2 Antibody (Center) in HepG2 cell line lysates (35ug/lane). This demonstrates the PALB2 antibody detected the PALB2 protein (arrow).