

Datasheet for ABIN953982  
**anti-PALM3 antibody (C-Term)**



[Go to Product page](#)

**3** Images

### Overview

Quantity:	0.4 mL
Target:	PALM3
Binding Specificity:	AA 553-582, C-Term
Reactivity:	Human
Host:	Rabbit
Clonality:	Polyclonal
Application:	Western Blotting (WB), Flow Cytometry (FACS), Immunohistochemistry (Paraffin-embedded Sections) (IHC (p)), Enzyme Immunoassay (EIA)

### Product Details

Immunogen:	KLH conjugated synthetic peptide between 553-582 amino acids from the C-terminal region of human PALM3
Isotype:	Ig Fraction
Specificity:	This antibody recognizes Human PALM3 (C-term).
Purification:	Protein A column, followed by peptide affinity purification

### Target Details

Target:	PALM3
Alternative Name:	PALM3 ( <a href="#">PALM3 Products</a> )
Background:	PALM3 is a ATP-binding protein (By similarity).Synonyms: Paralemmin-3

## Target Details

Molecular Weight:	71695 Da
Gene ID:	342979
NCBI Accession:	<a href="#">NP_001138500</a>

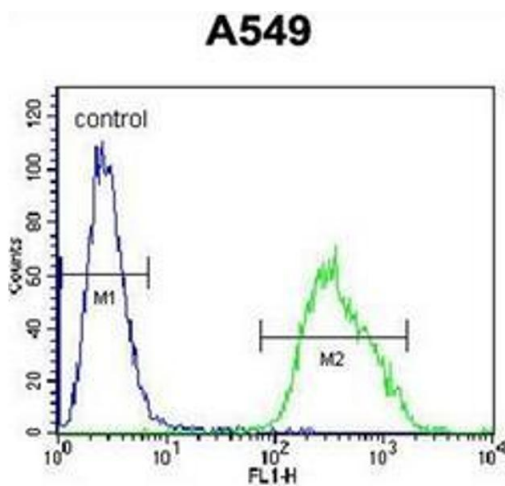
## Application Details

Application Notes:	Optimal working dilution should be determined by the investigator.
Restrictions:	For Research Use only

## Handling

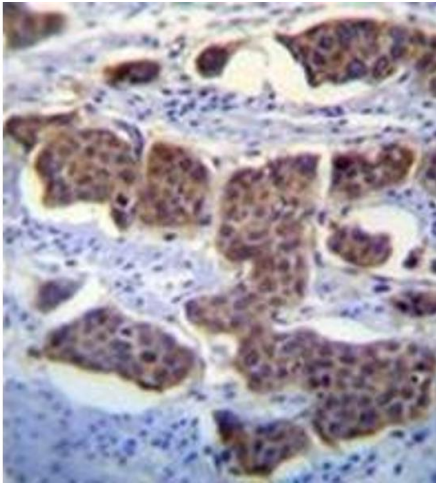
Format:	Liquid
Concentration:	0.25 mg/mL
Buffer:	PBS containing 0.09 % (W/V) Sodium Azide as preservative
Preservative:	Sodium azide
Precaution of Use:	This product contains sodium azide: a POISONOUS AND HAZARDOUS SUBSTANCE which should be handled by trained staff only.
Handling Advice:	Avoid repeated freezing and thawing.
Storage:	4 °C/-20 °C
Storage Comment:	Store undiluted at 2-8 °C for one month or (in aliquots) at -20 °C for longer.

## Images



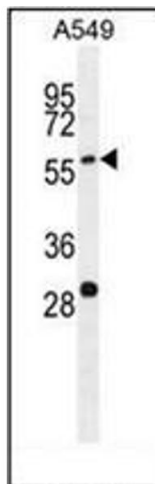
### Flow Cytometry

**Image 1.** Flow cytometric analysis of A549 cells using PALM3 Antibody (C-term) Cat.No AP53156PU-N (right histogram) compared to a negative control cell (left histogram). FITC-conjugated goat-anti-rabbit secondary antibodies were used for the analysis.



### Immunohistochemistry (Paraffin-embedded Sections)

**Image 2.** Immunohistochemistry analysis in formalin fixed and paraffin embedded human bladder carcinoma reacted with PALM3 Antibody (C-term) followed by peroxidase conjugation of the secondary antibody and DAB staining. This data demonstrates the use of PALM3 Antibody (C-term) for immunohistochemistry. Clinical relevance has not been evaluated.



### Western Blotting

**Image 3.** Western blot analysis of PALM3 Antibody (C-term) in A549 cell line lysates (35ug/lane). This demonstrates the PALM3 antibody detected the PALM3 protein (arrow).