

Datasheet for ABIN953984

anti-Pannexin 3 antibody (N-Term)[Go to Product page](#)**1** Image

Overview

Quantity:	0.4 mL
Target:	Pannexin 3 (PANX3)
Binding Specificity:	AA 2-31, N-Term
Reactivity:	Human
Host:	Rabbit
Clonality:	Polyclonal
Conjugate:	This Pannexin 3 antibody is un-conjugated
Application:	Western Blotting (WB), Enzyme Immunoassay (EIA)

Product Details

Immunogen:	KLH conjugated synthetic peptide between 2-31 amino acids from the N-terminal region of Human PANX3
Isotype:	Ig Fraction
Specificity:	This antibody recognizes Human PANX3 (N-term).
Purification:	Protein A column, followed by peptide affinity purification

Target Details

Target:	Pannexin 3 (PANX3)
Alternative Name:	PANX3 (PANX3 Products)
Background:	The protein encoded by this gene belongs to the innexin family. Innexin family members are

Target Details

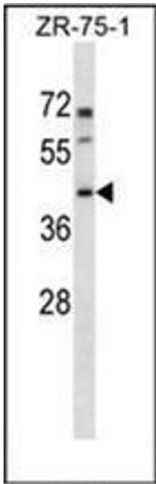
	known to be the structural components of gap junctions.Synonyms: PX3, Pannexin 3, Pannexin-3
Molecular Weight:	44683 Da
Gene ID:	116337
NCBI Accession:	NP_443191

Application Details

Application Notes:	Optimal working dilution should be determined by the investigator.
Restrictions:	For Research Use only

Handling

Format:	Liquid
Concentration:	0.25 mg/mL
Buffer:	PBS containing 0.09 % (W/V) Sodium Azide as preservative
Preservative:	Sodium azide
Precaution of Use:	This product contains sodium azide: a POISONOUS AND HAZARDOUS SUBSTANCE which should be handled by trained staff only.
Handling Advice:	Avoid repeated freezing and thawing.
Storage:	4 °C/-20 °C
Storage Comment:	Store undiluted at 2-8 °C for one month or (in aliquots) at -20 °C for longer.



Western Blotting

Image 1. Western blot analysis of PANX3 Antibody (N-term) in ZR-75-1 cell line lysates (35ug/lane). This demonstrates the PANX3 antibody detected the PANX3 protein (arrow).