



[Go to Product page](#)

Datasheet for ABIN953985
anti-PAPOLA antibody (Middle Region)

2 Images

Overview

Quantity:	0.4 mL
Target:	PAPOLA
Binding Specificity:	AA 414-443, Middle Region
Reactivity:	Human
Host:	Rabbit
Clonality:	Polyclonal
Conjugate:	This PAPOLA antibody is un-conjugated
Application:	Western Blotting (WB), Immunohistochemistry (Paraffin-embedded Sections) (IHC (p)), Enzyme Immunoassay (EIA)

Product Details

Immunogen:	KLH conjugated synthetic peptide between 414-443 amino acids from the Central region of human PAPOLA
Isotype:	Ig Fraction
Specificity:	This antibody recognizes Human PAPOLA (Center).
Purification:	Protein A column, followed by peptide affinity purification

Target Details

Target:	PAPOLA
Alternative Name:	PAPOLA (PAPOLA Products)

Target Details

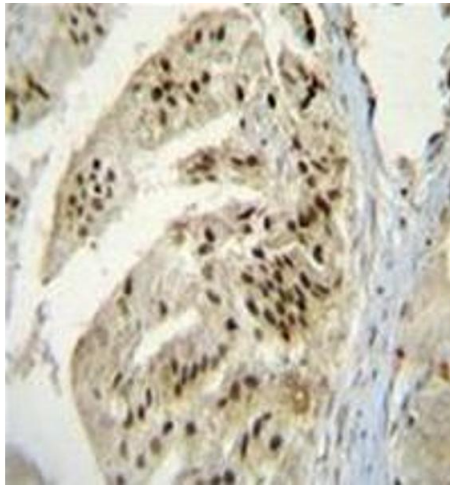
Background:	Polymerase that creates the 3'-poly(A) tail of mRNA's. Also required for the endoribonucleolytic cleavage reaction at some polyadenylation sites. May acquire specificity through interaction with a cleavage and polyadenylation specificity factor (CPSF) at its C-terminus.Synonyms: PAP-alpha, Poly(A) polymerase alpha, Polynucleotide adenylyltransferase alpha
Molecular Weight:	82843 Da
Gene ID:	10914
NCBI Accession:	NP_116021

Application Details

Application Notes:	Optimal working dilution should be determined by the investigator.
Restrictions:	For Research Use only

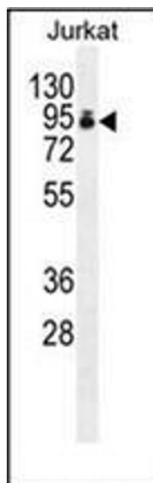
Handling

Format:	Liquid
Concentration:	0.25 mg/mL
Buffer:	PBS containing 0.09 % (W/V) Sodium Azide as preservative
Preservative:	Sodium azide
Precaution of Use:	This product contains sodium azide: a POISONOUS AND HAZARDOUS SUBSTANCE which should be handled by trained staff only.
Handling Advice:	Avoid repeated freezing and thawing.
Storage:	4 °C/-20 °C
Storage Comment:	Store undiluted at 2-8 °C for one month or (in aliquots) at -20 °C for longer.



Immunohistochemistry (Paraffin-embedded Sections)

Image 1. Immunohistochemistry analysis in formalin fixed and paraffin embedded human prostate carcinoma reacted with AP53159PU-N, which was peroxidase conjugated to the secondary antibody and followed by DAB staining. This data demonstrates the use of PAP Antibody (Center) for immunohistochemistry. Clinical relevance has not been evaluated.



Western Blotting

Image 2. Western blot analysis of PAP Antibody (Center) in Jurkat cell line lysates (35ug/lane). This demonstrates the PAP antibody detected the PAP protein (arrow).