

Datasheet for ABIN953990  
**anti-SPG7 antibody (Middle Region)**

## 2 Images

[Go to Product page](#)

## Overview

Quantity:	0.4 mL
Target:	SPG7
Binding Specificity:	AA 114-141, Middle Region
Reactivity:	Human
Host:	Rabbit
Clonality:	Polyclonal
Conjugate:	This SPG7 antibody is un-conjugated
Application:	Western Blotting (WB), Immunohistochemistry (Paraffin-embedded Sections) (IHC (p)), Enzyme Immunoassay (EIA)

## Product Details

Immunogen:	Synthetic peptide - KLH conjugated - corresponding to the central region (between 114-141aa) of human Paraplegin / SPG7
Isotype:	Ig Fraction
Specificity:	This antibody recognizes Paraplegin / SPG7.
Cross-Reactivity (Details):	Species reactivity (tested):Human
Purification:	Purified through a Protein A column followed by peptide affinity purification

## Target Details

Target:	SPG7
---------	------

## Target Details

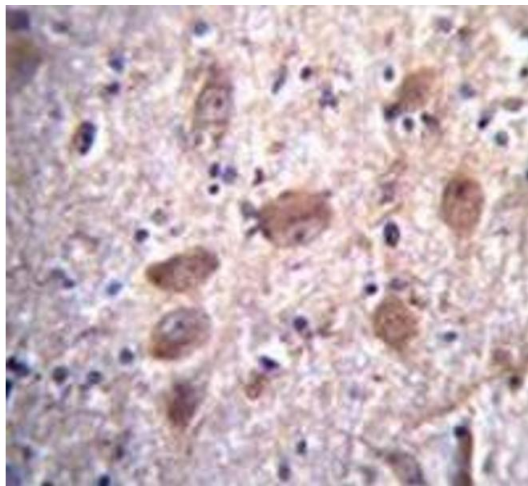
Alternative Name:	Paraplegin / SPG7 ( <a href="#">SPG7 Products</a> )
Background:	<p>The SPG7 gene encodes a nuclear-encoded mitochondrial metalloprotease protein that is a member of the AAA (ATPases associated with a variety of cellular activities) protein family. Members of this protein family share an ATPase domain and have roles in diverse cellular processes including membrane trafficking, intracellular motility, organelle biogenesis, protein folding, and proteolysis. Two transcript variants encoding distinct isoforms have been identified for this gene. Mutations associated with this gene cause autosomal recessive spastic paraplegia 7. Synonyms: CAR, CMAR, PGN, Spastic paraplegia 7 protein</p>
Gene ID:	6687
NCBI Accession:	<a href="#">NP_003110</a>

## Application Details

Application Notes:	Optimal working dilution should be determined by the investigator.
Restrictions:	For Research Use only

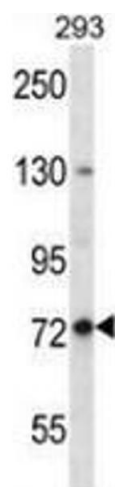
## Handling

Format:	Liquid
Concentration:	0.25 mg/mL
Buffer:	PBS with 0.09 % (W/V) Sodium azide
Preservative:	Sodium azide
Precaution of Use:	This product contains sodium azide: a POISONOUS AND HAZARDOUS SUBSTANCE which should be handled by trained staff only.
Handling Advice:	Avoid repeated freezing and thawing.
Storage:	4 °C/-20 °C
Storage Comment:	Store undiluted at 2-8 °C for one month or (in aliquots) at -20 °C for longer.



#### Immunohistochemistry (Paraffin-embedded Sections)

**Image 1.** Immunohistochemistry analysis in human brain tissue (Formalin-fixed, Paraffin-embedded) using Paraplegin / SPG7 Antibody , followed by peroxidase conjugation of the secondary antibody and DAB staining. This data demonstrates the use of SPG7 antibody for IHC; Clinical relevance has not been evaluated.



#### Western Blotting

**Image 2.** Western blot analysis in 293 cell line lysates (35ug/lane) using Paraplegin / SPG7 Antibody . This demonstrates the SPG7 antibody detected the SPG7 protein (arrow).