



[Go to Product page](#)

Datasheet for ABIN954006
anti-PAX1 antibody (C-Term)

2 Images

Overview

Quantity:	0.4 mL
Target:	PAX1
Binding Specificity:	AA 356-385, C-Term
Reactivity:	Human
Host:	Rabbit
Clonality:	Polyclonal
Conjugate:	This PAX1 antibody is un-conjugated
Application:	Western Blotting (WB), Flow Cytometry (FACS), Enzyme Immunoassay (EIA)

Product Details

Immunogen:	KLH conjugated synthetic peptide between 356-385 amino acids from the C-terminal region of Human PAX1
Isotype:	Ig Fraction
Specificity:	This antibody recognizes Human PAX1 (C-term).
Cross-Reactivity (Details):	Species reactivity (tested):Human.
Purification:	Protein A column, followed by peptide affinity purification

Target Details

Target:	PAX1
Alternative Name:	PAX1 (PAX1 Products)

Target Details

Background: The PAX genes, including PAX1, are a highly conserved family of developmental control genes that encode transcription factors and have been shown to play a role in pattern formation during embryogenesis in vertebrates (McGaughran et al., 2003 [PubMed 12774041]). See PAX7 (MIM 167410) for a discussion of paired box domain genes. Synonyms: HUP48, Paired box protein Pax-1, Pax-1

Molecular Weight: 55499 Da

Gene ID: 5075

NCBI Accession: [NP_006183](#)

Application Details

Application Notes: Optimal working dilution should be determined by the investigator.

Restrictions: For Research Use only

Handling

Format: Liquid

Concentration: 0.25 mg/mL

Buffer: PBS containing 0.09 % (W/V) Sodium Azide as preservative

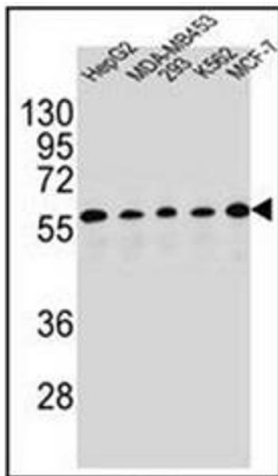
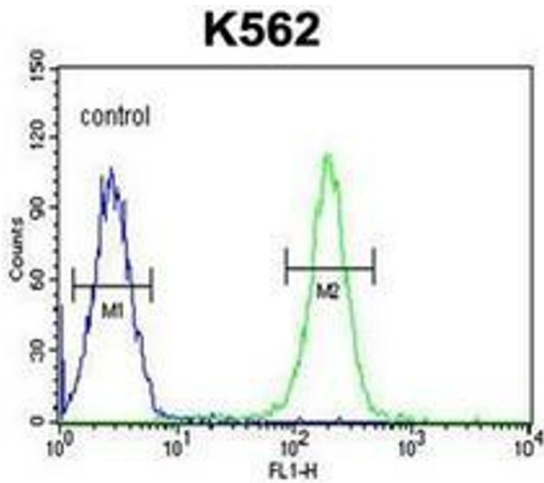
Preservative: Sodium azide

Precaution of Use: This product contains sodium azide: a POISONOUS AND HAZARDOUS SUBSTANCE which should be handled by trained staff only.

Handling Advice: Avoid repeated freezing and thawing.

Storage: 4 °C/-20 °C

Storage Comment: Store undiluted at 2-8 °C for one month or (in aliquots) at -20 °C for longer.



Flow Cytometry

Image 1. Flow Cytometric analysis of K562 cells using PAX1 Antibody (C-term) Cat.-No AP53177PU-N (right histogram) compared to a negative control cell (left histogram). FITC-conjugated Goat-anti-Rabbit secondary antibodies were used for the analysis.

Western Blotting

Image 2. Western blot analysis of PAX1 Antibody (C-term) in HepG2, MDA-MB453, 293, K562, MCF-7 cell line lysates (35ug/lane). This demonstrates the PAX1 antibody detected the PAX1 protein (arrow).