



[Go to Product page](#)

Datasheet for ABIN954020

anti-PBXIP1 antibody (C-Term)

2 Images

Overview

Quantity:	0.4 mL
Target:	PBXIP1
Binding Specificity:	C-Term
Reactivity:	Human
Host:	Rabbit
Clonality:	Polyclonal
Conjugate:	This PBXIP1 antibody is un-conjugated
Application:	Western Blotting (WB), Enzyme Immunoassay (EIA)

Product Details

Isotype:	Ig Fraction
Specificity:	This antibody reacts to PBXIP1.
Cross-Reactivity (Details):	Species reactivity (tested):Human.
Purification:	Affinity chromatography on Protein A

Target Details

Target:	PBXIP1
Alternative Name:	PBXIP1 (PBXIP1 Products)
Background:	Regulator of pre-B-cell leukemia transcription factors (BPXs) function. Inhibits the binding of PBX1-HOX complex to DNA and blocks the transcriptional activity of E2A-PBX1. Tethers

Target Details

estrogen receptor-alpha (ESR1) to microtubules and allows them to influence estrogen receptors-alpha signaling. Synonyms: HPIP, Hematopoietic PBX-interacting protein, Pre-B-cell leukemia transcription factor-interacting protein 1

Molecular Weight: 80643 Da

Gene ID: 57326

NCBI Accession: [NP_065385](#)

Application Details

Application Notes: Optimal working dilution should be determined by the investigator.

Restrictions: For Research Use only

Handling

Format: Liquid

Concentration: 0.25 mg/mL

Buffer: PBS, 0.09 % (W/V) sodium azide

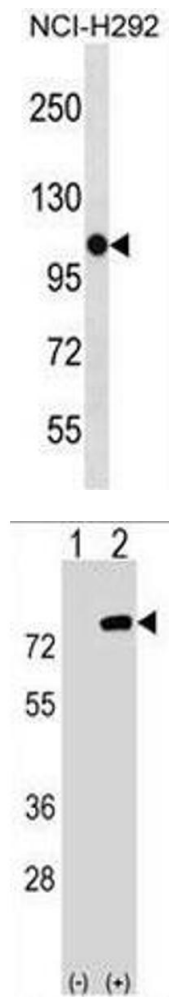
Preservative: Sodium azide

Precaution of Use: This product contains sodium azide: a POISONOUS AND HAZARDOUS SUBSTANCE which should be handled by trained staff only.

Handling Advice: Avoid repeated freezing and thawing.

Storage: 4 °C/-20 °C

Storage Comment: Store the antibody undiluted at 2-8 °C for one month or (in aliquots) at -20 °C for longer.



Western Blotting

Image 1. PBXIP1 Antibody (C-term) western blot analysis in NCI-H292 cell line lysates (35µg/lane). This demonstrates the PBXIP1 antibody detected the PBXIP1 protein (arrow).

Western Blotting

Image 2. Western blot analysis of PBXIP1 (arrow) using rabbit polyclonal PBXIP1 Antibody (C-term) . 293 cell lysates (2 µg/lane) either nontransfected (Lane 1) or transiently transfected (Lane 2) with the PBXIP1 gene.