

Datasheet for ABIN954025
anti-PCCA antibody (Middle Region)

2 Images

[Go to Product page](#)

Overview

Quantity:	0.4 mL
Target:	PCCA
Binding Specificity:	AA 336-365, Middle Region
Reactivity:	Human
Host:	Rabbit
Clonality:	Polyclonal
Application:	Western Blotting (WB), Enzyme Immunoassay (EIA)

Product Details

Immunogen:	KLH conjugated synthetic peptide between 336-365 amino acids from the Central region of human PCCA
Isotype:	Ig Fraction
Specificity:	This antibody reacts to PCCA.
Cross-Reactivity (Details):	Species reactivity (tested):Human.
Purification:	Affinity chromatography on Protein A

Target Details

Target:	PCCA
Alternative Name:	PCCA (PCCA Products)
Background:	The protein encoded by this gene is the alpha subunit of the heterodimeric mitochondrial

Target Details

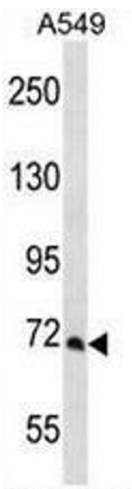
	enzyme Propionyl-CoA carboxylase. PCCA encodes the biotin-binding region of this enzyme. Mutations in either PCCA or PCCB (encoding the beta subunit) lead to an enzyme deficiency resulting in propionic acidemia. Multiple transcript variants encoding different isoforms have been found for this gene.Synonyms: PCCase subunit alpha, Propanoyl-CoA:carbon dioxide ligase subunit alpha, Propionyl-CoA carboxylase alpha chain mitochondrial
Molecular Weight:	80059 Da
Gene ID:	5095
NCBI Accession:	NP_000273
Pathways:	Monocarboxylic Acid Catabolic Process

Application Details

Application Notes:	Optimal working dilution should be determined by the investigator.
Restrictions:	For Research Use only

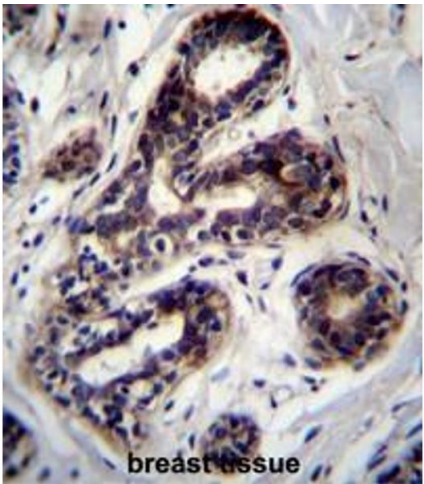
Handling

Format:	Liquid
Concentration:	0.25 mg/mL
Buffer:	PBS, 0.09 % (W/V) sodium azide
Preservative:	Sodium azide
Precaution of Use:	This product contains sodium azide: a POISONOUS AND HAZARDOUS SUBSTANCE which should be handled by trained staff only.
Handling Advice:	Avoid repeated freezing and thawing.
Storage:	4 °C/-20 °C
Storage Comment:	Store the antibody undiluted at 2-8 °C for one month or (in aliquots) at -20 °C for longer.



Western Blotting

Image 1. PCCA Antibody (Center) western blot analysis in A549 cell line lysates (35µg/lane). This demonstrates the PCCA antibody detected the PCCA protein (arrow).



Immunohistochemistry (Paraffin-embedded Sections)

Image 2. PCCA Antibody (Center) immunohistochemistry analysis in formalin fixed and paraffin embedded human breast tissue followed by peroxidase conjugation of the secondary antibody and DAB staining. This data demonstrates the use of PCCA Antibody (Center) for immunohistochemistry. Clinical relevance has not been evaluated.