

Datasheet for ABIN954026

**anti-Protocadherin 1 antibody (N-Term)****3** Images[Go to Product page](#)

## Overview

Quantity:	0.4 mL
Target:	Protocadherin 1 (PCDH1)
Binding Specificity:	AA 186-214, N-Term
Reactivity:	Human
Host:	Rabbit
Clonality:	Polyclonal
Conjugate:	This Protocadherin 1 antibody is un-conjugated
Application:	Western Blotting (WB), Immunofluorescence (IF), Enzyme Immunoassay (EIA)

## Product Details

Immunogen:	KLH conjugated synthetic peptide between 186-214 amino acids from the N-terminal region of human PCDH
Isotype:	Ig Fraction
Specificity:	This antibody reacts to PCDH1.
Cross-Reactivity (Details):	Species reactivity (tested):Human.
Purification:	Affinity chromatography on Protein A

## Target Details

Target:	Protocadherin 1 (PCDH1)
Alternative Name:	PCDH1 ( <a href="#">PCDH1 Products</a> )

## Target Details

**Background:** This gene belongs to the protocadherin subfamily within the cadherin superfamily. The encoded protein is a membrane protein found at cell-cell boundaries. It is involved in neural cell adhesion, suggesting a possible role in neuronal development. The protein includes an extracellular region, containing 7 cadherin-like domains, a transmembrane region and a C-terminal cytoplasmic region. Cells expressing the protein showed cell aggregation activity. Alternative splicing occurs in this gene. Synonyms: Cadherin-like protein 1, PC42, Protocadherin 1, Protocadherin 42, Protocadherin-1, Protocadherin-42

**Molecular Weight:** 114743 Da

**Gene ID:** 5097

**NCBI Accession:** [NP\\_002578](#)

## Application Details

**Application Notes:** Optimal working dilution should be determined by the investigator.

**Restrictions:** For Research Use only

## Handling

**Format:** Liquid

**Concentration:** 0.25 mg/mL

**Buffer:** PBS, 0.09 % (W/V) sodium azide

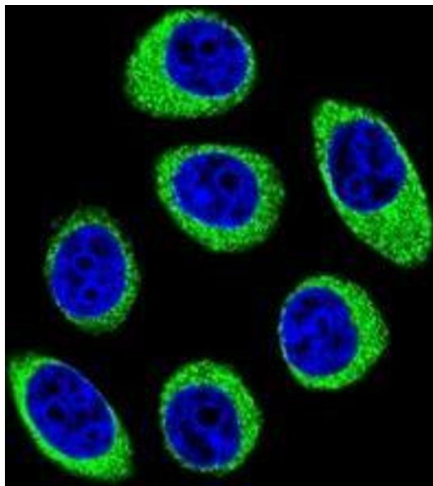
**Preservative:** Sodium azide

**Precaution of Use:** This product contains sodium azide: a POISONOUS AND HAZARDOUS SUBSTANCE which should be handled by trained staff only.

**Handling Advice:** Avoid repeated freezing and thawing.

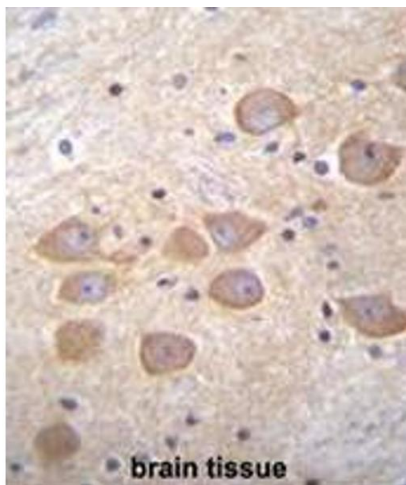
**Storage:** 4 °C/-20 °C

**Storage Comment:** Store the antibody undiluted at 2-8 °C for one month or (in aliquots) at -20 °C for longer.



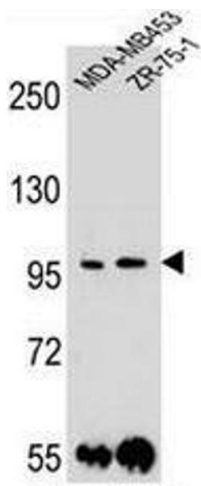
### Immunofluorescence

**Image 1.** Confocal immunofluorescent analysis of PCDH1 Antibody (N-term)(Cat#AP53193PU-N) with U-251MG cell followed by Alexa Fluor 488-conjugated goat anti-rabbit IgG (green). DAPI was used to stain the cell nuclear (blue).



### Immunohistochemistry (Paraffin-embedded Sections)

**Image 2.** PCDH1 Antibody (N-term) immunohistochemistry analysis in formalin fixed and paraffin embedded human brain tissue followed by peroxidase conjugation of the secondary antibody and DAB staining. This data demonstrates the use of PCDH1 Antibody (N-term) for immunohistochemistry. Clinical relevance has not been evaluated.



### Western Blotting

**Image 3.** PCDH1 Antibody (N-term) western blot analysis in MDA-MB453,ZR-75-1 cell line lysates (35µg/lane). This demonstrates the PCDH1 antibody detected the PCDH1 protein (arrow).