



[Go to Product page](#)

Datasheet for ABIN954029

## anti-PCDH20 antibody (Middle Region)

### 4 Images

#### Overview

Quantity:	0.4 mL
Target:	PCDH20
Binding Specificity:	AA 452-480, Middle Region
Reactivity:	Human
Host:	Rabbit
Clonality:	Polyclonal
Conjugate:	This PCDH20 antibody is un-conjugated
Application:	Western Blotting (WB), Enzyme Immunoassay (EIA)

#### Product Details

Immunogen:	KLH conjugated synthetic peptide between 452-480 amino acids from the Central region of human PCDH20
Isotype:	Ig Fraction
Specificity:	This antibody reacts to PCDH20.
Cross-Reactivity (Details):	Species reactivity (tested):Human.
Purification:	Affinity chromatography on Protein A

#### Target Details

Target:	PCDH20
Alternative Name:	PCDH20 ( <a href="#">PCDH20 Products</a> )

## Target Details

---

**Background:** This gene belongs to the protocadherin gene family, a subfamily of the cadherin superfamily. This gene encodes a protein which contains 6 extracellular cadherin domains, a transmembrane domain and a cytoplasmic tail differing from those of the classical cadherins. Although its specific function is undetermined, the cadherin-related neuronal receptor is thought to play a role in the establishment and function of specific cell-cell connections in the brain. Synonyms: PCDH13, Protocadherin 13, Protocadherin 20, Protocadherin-13, Protocadherin-20

**Molecular Weight:** 101927 Da

**Gene ID:** 64881

**NCBI Accession:** [NP\\_073754](#)

## Application Details

---

**Application Notes:** Optimal working dilution should be determined by the investigator.

**Restrictions:** For Research Use only

## Handling

---

**Format:** Liquid

**Concentration:** 0.25 mg/mL

**Buffer:** PBS, 0,09 % sodium azide

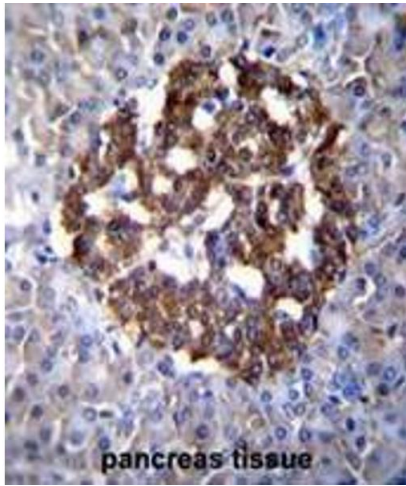
**Preservative:** Sodium azide

**Precaution of Use:** This product contains sodium azide: a POISONOUS AND HAZARDOUS SUBSTANCE which should be handled by trained staff only.

**Handling Advice:** Avoid repeated freezing and thawing.

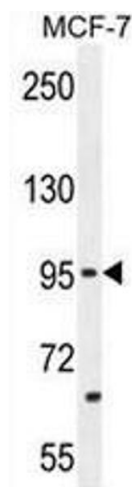
**Storage:** 4 °C/-20 °C

**Storage Comment:** Store the antibody undiluted at 2-8 °C for one month or (in aliquots) at -20 °C for longer.



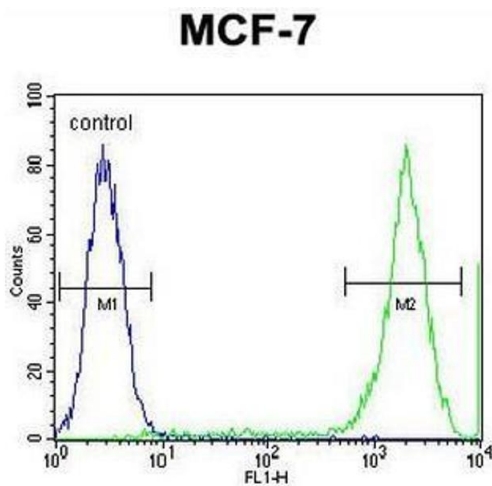
### Immunohistochemistry (Paraffin-embedded Sections)

**Image 1.** PCDH20 Antibody (Center) immunohistochemistry analysis in formalin fixed and paraffin embedded human pancreas tissue followed by peroxidase conjugation of the secondary antibody and DAB staining. This data demonstrates the use of PCDH20 Antibody (Center) for immunohistochemistry. Clinical relevance has not been evaluated.



### Western Blotting

**Image 2.** PCDH20 Antibody (Center) western blot analysis in MCF-7 cell line lysates (35µg/lane). This demonstrates the PCDH20 antibody detected the PCDH20 protein (arrow).



### Flow Cytometry

**Image 3.** PCDH20 Antibody (Center) flow cytometric analysis of MCF-7 cells (right histogram) compared to a negative control cell (left histogram). FITC-conjugated goat-anti-rabbit secondary antibodies were used for the analysis.

Please check the [product details page](#) for more images. Overall 4 images are available for ABIN954029.