

Datasheet for ABIN954038
anti-PCDHAC2 antibody (Middle Region)

3 Images

[Go to Product page](#)

Overview

Quantity:	0.4 mL
Target:	PCDHAC2
Binding Specificity:	AA 623-652, Middle Region
Reactivity:	Human
Host:	Rabbit
Clonality:	Polyclonal
Conjugate:	This PCDHAC2 antibody is un-conjugated
Application:	Western Blotting (WB), Immunofluorescence (IF), Immunohistochemistry (Paraffin-embedded Sections) (IHC (p)), Enzyme Immunoassay (EIA)

Product Details

Immunogen:	Synthetic peptide - KLH conjugated - corresponding to the central region (between 623-652aa) of human PCDHAC2.
Isotype:	Ig Fraction
Specificity:	This antibody detects human PCDHAC2.
Cross-Reactivity (Details):	Species reactivity (tested):Human
Purification:	Purified through a protein A column; followed by peptide affinity purification.

Target Details

Target:	PCDHAC2
---------	---------

Target Details

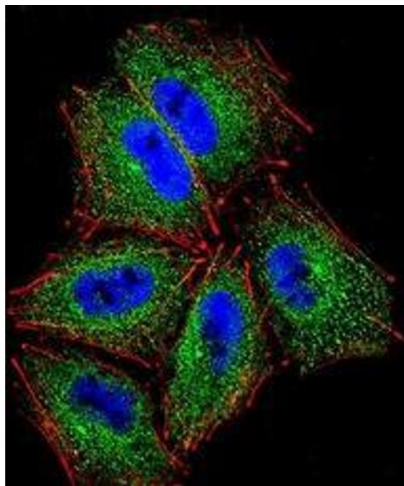
Alternative Name:	PCDHAC2 (PCDHAC2 Products)
Background:	<p>The PCDHAC2 gene is a member of the protocadherin alpha gene cluster, one of three related gene clusters tandemly linked on chromosome five that demonstrate an unusual genomic organization similar to that of B-cell and T-cell receptor gene clusters. The alpha gene cluster is composed of 15 cadherin superfamily genes related to the mouse CNR genes and consists of 13 highly similar and 2 more distantly related coding sequences. The tandem array of 15 N-terminal exons, or variable exons, are followed by downstream C-terminal exons, or constant exons, which are shared by all genes in the cluster. The large, uninterrupted N-terminal exons each encode six cadherin ectodomains while the C-terminal exons encode the cytoplasmic domain. These neural cadherin-like cell adhesion proteins are integral plasma membrane proteins that most likely play a critical role in the establishment and function of specific cell-cell connections in the brain. Alternative splicing has been observed and additional variants have been suggested but their full-length nature has yet to be determined. Synonyms: PCDH-alpha-C2, Protocadherin alpha-C2</p>
Gene ID:	56134
NCBI Accession:	NP_061722

Application Details

Application Notes:	Optimal working dilution should be determined by the investigator.
Restrictions:	For Research Use only

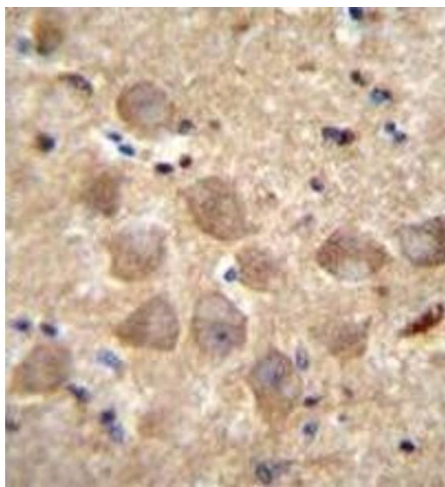
Handling

Format:	Liquid
Concentration:	0.25 mg/mL
Buffer:	PBS with 0.09 % (W/V) Sodium Azide.
Preservative:	Sodium azide
Precaution of Use:	This product contains sodium azide: a POISONOUS AND HAZARDOUS SUBSTANCE which should be handled by trained staff only.
Handling Advice:	Avoid repeated freezing and thawing.
Storage:	4 °C/-20 °C
Storage Comment:	Store the antibody undiluted at 2-8 °C for one month or (in aliquots) at -20 °C for longer.



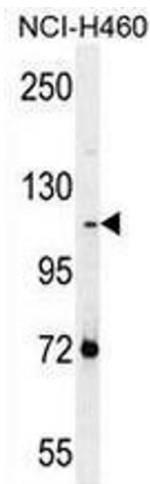
Immunofluorescence

Image 1. Confocal immunofluorescent analysis of NCI-H460 cells using PCDHAC2 Antibody , followed by Alexa Fluor 488-conjugated goat anti-rabbit IgG (green). Actin filaments have been labeled with Alexa Fluor 555 phalloidin (red). DAPI was used to stain the cell nuclear (blue).



Immunohistochemistry (Paraffin-embedded Sections)

Image 2. Immunohistochemistry analysis in human brain tissue (formalin-fixed, paraffin-embedded) using PCDHAC2 Antibody , followed by peroxidase conjugation of the secondary antibody and DAB staining. This data demonstrates the use of PCDHAC2 antibody for IHC. Clinical relevance has not been evaluated.



Western Blotting

Image 3. Western blot analysis in NCI-H460 cell line lysates (35ug/lane) using PCDHAC2 Antibody . This demonstrates the PCDHAC2 antibody detected the PCDHAC2 protein (arrow).