

Datasheet for ABIN954041
anti-PCDHB12 antibody (C-Term)[Go to Product page](#)

2 Images

Overview

Quantity:	0.4 mL
Target:	PCDHB12
Binding Specificity:	AA 765-795, C-Term
Reactivity:	Human
Host:	Rabbit
Clonality:	Polyclonal
Conjugate:	This PCDHB12 antibody is un-conjugated
Application:	Western Blotting (WB), Immunohistochemistry (Paraffin-embedded Sections) (IHC (p)), Enzyme Immunoassay (EIA)

Product Details

Immunogen:	Synthetic peptide - KLH conjugated - corresponding to the C-terminal region (between 765-795aa) of human PCDHB12.
Isotype:	Ig Fraction
Specificity:	This antibody detects human PCDHB12 at C-term.
Cross-Reactivity (Details):	Species reactivity (tested):Human
Purification:	Purified through a protein A column; followed by peptide affinity purification.

Target Details

Target:	PCDHB12
---------	---------

Target Details

Alternative Name:	PCDHB12 (PCDHB12 Products)
Background:	<p>The PCDHB12 gene is a member of the protocadherin beta gene cluster, one of three related gene clusters tandemly linked on chromosome five. The gene clusters demonstrate an unusual genomic organization similar to that of B-cell and T-cell receptor gene clusters. The beta cluster contains 16 genes and 3 pseudogenes, each encoding 6 extracellular cadherin domains and a cytoplasmic tail that deviates from others in the cadherin superfamily. The extracellular domains interact in a homophilic manner to specify differential cell-cell connections. Unlike the alpha and gamma clusters, the transcripts from these genes are made up of only one large exon, not sharing common 3' exons as expected. These neural cadherin-like cell adhesion proteins are integral plasma membrane proteins. Their specific functions are unknown but they most likely play a critical role in the establishment and function of specific cell-cell neural connections. Synonyms: PCDH-beta-12, Protocadherin beta-12</p>

Gene ID:	56124
----------	-------

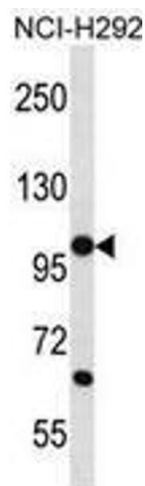
NCBI Accession:	NP_061755
-----------------	---------------------------

Application Details

Application Notes:	Optimal working dilution should be determined by the investigator.
Restrictions:	For Research Use only

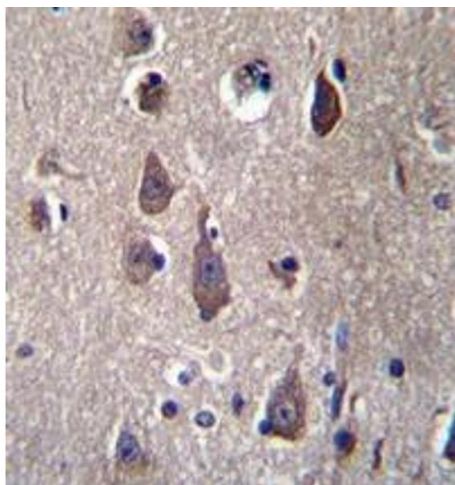
Handling

Format:	Liquid
Concentration:	0.25 mg/mL
Buffer:	PBS with 0.09 % (W/V) Sodium Azide.
Preservative:	Sodium azide
Precaution of Use:	This product contains sodium azide: a POISONOUS AND HAZARDOUS SUBSTANCE which should be handled by trained staff only.
Handling Advice:	Avoid repeated freezing and thawing.
Storage:	4 °C/-20 °C
Storage Comment:	Store the antibody undiluted at 2-8 °C for one month or (in aliquots) at -20 °C for longer.



Western Blotting

Image 1. Western blot analysis in NCI-H292 cell line lysates (35ug/lane) using PCDHB12 Antibody (C-term). This demonstrates the PCDHB12 antibody detected the PCDHB12 protein (arrow).



Immunohistochemistry (Paraffin-embedded Sections)

Image 2. Immunohistochemistry analysis in human brain tissue (formalin-fixed, paraffin-embedded) using PCDHB12 Antibody (C-term), followed by peroxidase conjugation of the secondary antibody and DAB staining. This data demonstrates the use of PCDHB12 antibody for IHC. Clinical relevance has not been evaluated.