

Datasheet for ABIN954045
anti-PCDHB3 antibody (N-Term)

3 Images

[Go to Product page](#)

Overview

Quantity:	0.4 mL
Target:	PCDHB3
Binding Specificity:	AA 19-47, N-Term
Reactivity:	Human
Host:	Rabbit
Clonality:	Polyclonal
Conjugate:	This PCDHB3 antibody is un-conjugated
Application:	Western Blotting (WB), Immunofluorescence (IF), Immunohistochemistry (Paraffin-embedded Sections) (IHC (p)), Enzyme Immunoassay (EIA)

Product Details

Immunogen:	KLH conjugated synthetic peptide between 19-47 amino acids from the N-terminal region of Human PCDHB3.
Isotype:	Ig Fraction
Specificity:	This antibody recognizes Human PCDHB3 (N-term).
Purification:	Protein A column, followed by peptide affinity purification

Target Details

Target:	PCDHB3
Alternative Name:	PCDHB3 (PCDHB3 Products)

Target Details

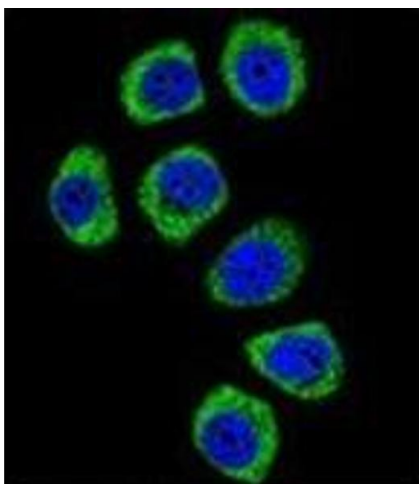
Background:	<p>This gene is a member of the protocadherin beta gene cluster, one of three related gene clusters tandemly linked on chromosome five. The gene clusters demonstrate an unusual genomic organization similar to that of B-cell and T-cell receptor gene clusters. The beta cluster contains 16 genes and 3 pseudogenes, each encoding 6 extracellular cadherin domains and a cytoplasmic tail that deviates from others in the cadherin superfamily. The extracellular domains interact in a homophilic manner to specify differential cell-cell connections. Unlike the alpha and gamma clusters, the transcripts from these genes are made up of only one large exon, not sharing common 3' exons as expected. These neural cadherin-like cell adhesion proteins are integral plasma membrane proteins. Their specific functions are unknown but they most likely play a critical role in the establishment and function of specific cell-cell neural connections.</p> <p>Synonyms: PCDH-beta-3, Protocadherin beta-3</p>
Molecular Weight:	86773 Da
Gene ID:	56132
NCBI Accession:	NP_061760

Application Details

Application Notes:	Optimal working dilution should be determined by the investigator.
Restrictions:	For Research Use only

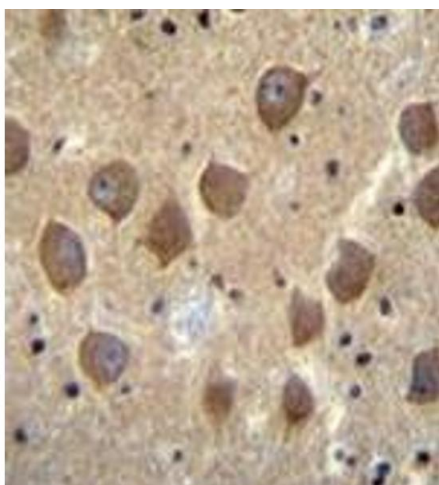
Handling

Format:	Liquid
Concentration:	0.25 mg/mL
Buffer:	PBS containing 0.09 % (W/V) Sodium Azide as preservative
Preservative:	Sodium azide
Precaution of Use:	This product contains sodium azide: a POISONOUS AND HAZARDOUS SUBSTANCE which should be handled by trained staff only.



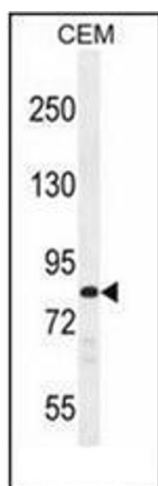
Immunofluorescence

Image 1. Confocal immunofluorescent analysis of PCDHB3 Antibody (N-term) Cat.-No AP53211PU-N with U-251MG cell followed by Alexa Fluor 488-conjugated goat anti-rabbit IgG (green). DAPI was used to stain the cell nuclear (blue).



Immunohistochemistry (Paraffin-embedded Sections)

Image 2. Immunohistochemistry analysis in formalin fixed and paraffin embedded human brain tissue reacted with PCDHB3 Antibody (N-term) followed by peroxidase conjugation of the secondary antibody and DAB staining.



Western Blotting

Image 3. Western blot analysis of PCDHB3 Antibody (N-term) in CEM cell line lysates (35ug/lane). This demonstrates the PCDHB3 antibody detected the PCDHB3 protein (arrow).