

Datasheet for ABIN954054  
**anti-PCOTH antibody (Middle Region)**[Go to Product page](#)

## 3 Images

## Overview

Quantity:	0.4 mL
Target:	PCOTH (C1QTNF9B-AS1)
Binding Specificity:	AA 21-50, Middle Region
Reactivity:	Human
Host:	Rabbit
Clonality:	Polyclonal
Conjugate:	This PCOTH antibody is un-conjugated
Application:	Western Blotting (WB), Flow Cytometry (FACS), Immunohistochemistry (Paraffin-embedded Sections) (IHC (p)), Enzyme Immunoassay (EIA)

## Product Details

Immunogen:	KLH conjugated synthetic peptide between 21-50 amino acids from the Central region of Human PCOTH
Isotype:	Ig Fraction
Specificity:	This antibody recognizes Human PCOTH (Center).
Purification:	Protein A column, followed by peptide affinity purification

## Target Details

Target:	PCOTH (C1QTNF9B-AS1)
Alternative Name:	PCOTH ( <a href="#">C1QTNF9B-AS1 Products</a> )

## Target Details

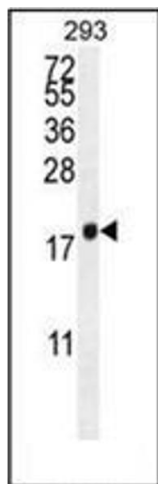
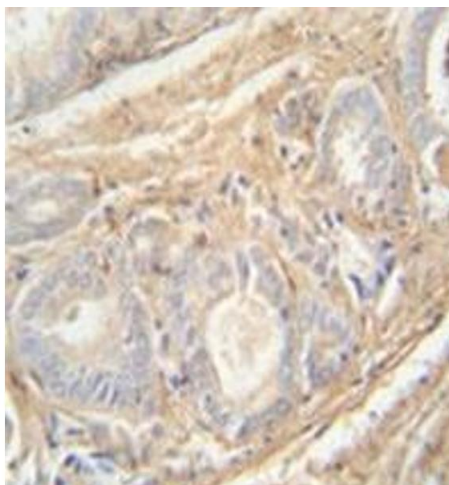
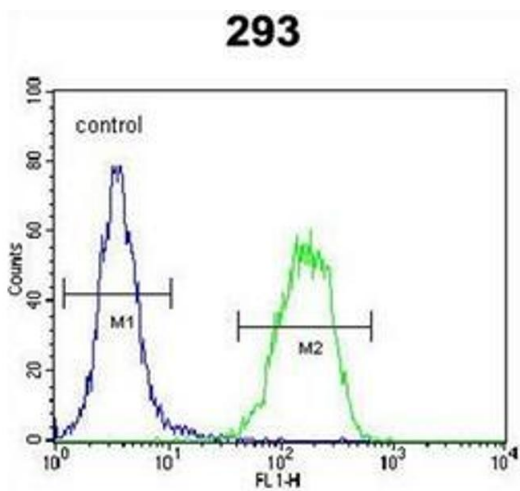
Background:	May be involved in growth and survival of prostate cancer cells through the TAF-Ibeta pathway Synonyms: Protein
Molecular Weight:	10968 Da
Gene ID:	542767
NCBI Accession:	<a href="#">NP_001014442</a>

## Application Details

Application Notes:	Optimal working dilution should be determined by the investigator.
Restrictions:	For Research Use only

## Handling

Format:	Liquid
Concentration:	0.25 mg/mL
Buffer:	PBS containing 0.09 % (W/V) Sodium Azide as preservative
Preservative:	Sodium azide
Precaution of Use:	This product contains sodium azide: a POISONOUS AND HAZARDOUS SUBSTANCE which should be handled by trained staff only.
Handling Advice:	Avoid repeated freezing and thawing.
Storage:	4 °C/-20 °C
Storage Comment:	Store undiluted at 2-8 °C for one month or (in aliquots) at -20 °C for longer.



### Flow Cytometry

**Image 1.** Flow cytometric analysis of 293 cells using PCOTH Antibody (Center) Cat.-No AP53220PU-N (right histogram) compared to a negative control cell (left histogram). FITC-conjugated goat-anti-rabbit secondary antibodies were used for the analysis.

### Immunohistochemistry (Paraffin-embedded Sections)

**Image 2.** Immunohistochemistry analysis in formalin fixed and paraffin embedded human prostate carcinoma reacted with PCOTH Antibody (Center) followed by peroxidase conjugation of the secondary antibody and DAB staining.

### Western Blotting

**Image 3.** Western blot analysis of PCOTH Antibody (Center) in 293 cell line lysates (35ug/lane). This demonstrates the PCOTH antibody detected the PCOTH protein (arrow).