

Datasheet for ABIN954056

anti-PCTP antibody (Middle Region)[Go to Product page](#)**1** Image

Overview

Quantity:	0.4 mL
Target:	PCTP
Binding Specificity:	AA 58-87, Middle Region
Reactivity:	Human
Host:	Rabbit
Clonality:	Polyclonal
Conjugate:	This PCTP antibody is un-conjugated
Application:	Western Blotting (WB), Enzyme Immunoassay (EIA)

Product Details

Immunogen:	KLH conjugated synthetic peptide between 58-87 amino acids from the Central region of human PCTP
Isotype:	Ig Fraction
Specificity:	This antibody recognizes Human PCTP (Cenetr).
Purification:	Protein A column, followed by peptide affinity purification

Target Details

Target:	PCTP
Alternative Name:	PCTP (PCTP Products)
Background:	PCTP catalyzes the transfer of phosphatidylcholine between membranes. Binds a single lipid

Target Details

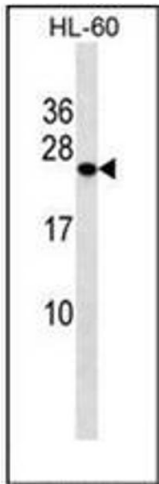
	molecule.Synonyms: PC-TP, Phosphatidylcholine transfer protein, STARD2, START domain-containing protein 2, StAR-related lipid transfer protein 2
Molecular Weight:	24843 Da
Gene ID:	58488
NCBI Accession:	NP_001095872

Application Details

Application Notes:	Optimal working dilution should be determined by the investigator.
Restrictions:	For Research Use only

Handling

Format:	Liquid
Concentration:	0.25 mg/mL
Buffer:	PBS containing 0.09 % (W/V) Sodium Azide as preservative
Preservative:	Sodium azide
Precaution of Use:	This product contains sodium azide: a POISONOUS AND HAZARDOUS SUBSTANCE which should be handled by trained staff only.
Handling Advice:	Avoid repeated freezing and thawing.
Storage:	4 °C/-20 °C
Storage Comment:	Store undiluted at 2-8 °C for one month or (in aliquots) at -20 °C for longer.



Western Blotting

Image 1. Western blot analysis of PCTP Antibody (Center) in HL-60 cell line lysates (35ug/lane). This demonstrates the PCTP antibody detected the PCTP protein (arrow).