

Datasheet for ABIN954057  
**anti-PCYT1A antibody (N-Term)**

## 3 Images

[Go to Product page](#)

## Overview

Quantity:	0.4 mL
Target:	PCYT1A
Binding Specificity:	AA 34-62, N-Term
Reactivity:	Human
Host:	Rabbit
Clonality:	Polyclonal
Conjugate:	This PCYT1A antibody is un-conjugated
Application:	Western Blotting (WB), Immunofluorescence (IF), Immunohistochemistry (Paraffin-embedded Sections) (IHC (p)), Enzyme Immunoassay (EIA)

## Product Details

Immunogen:	KLH conjugated synthetic peptide between 34-62 amino acids from the N-terminal region of human PCYT1A.
Isotype:	Ig Fraction
Specificity:	This antibody recognizes Human PCYT1A (N-term).
Purification:	Protein A column, followed by peptide affinity purification

## Target Details

Target:	PCYT1A
Alternative Name:	PCYT1A ( <a href="#">PCYT1A Products</a> )

### Target Details

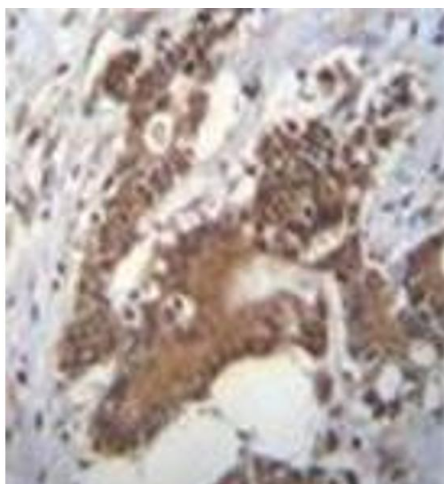
Background:	PCYT1A controls phosphatidylcholine synthesis.Synonyms: CCT A, CCT-alpha, CTP:phosphocholine cytidyltransferase A, CTPCT, Choline-phosphate cytidyltransferase A, PCYT1, Phosphorylcholine transferase A
Molecular Weight:	41731 Da
Gene ID:	5130
NCBI Accession:	<a href="#">NP_005008</a>

### Application Details

Application Notes:	Optimal working dilution should be determined by the investigator.
Restrictions:	For Research Use only

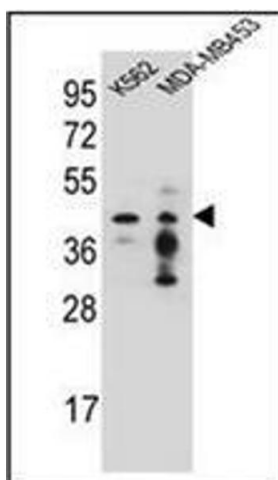
### Handling

Format:	Liquid
Concentration:	0.25 mg/mL
Buffer:	PBS containing 0.09 % (W/V) Sodium Azide as preservative
Preservative:	Sodium azide
Precaution of Use:	This product contains sodium azide: a POISONOUS AND HAZARDOUS SUBSTANCE which should be handled by trained staff only.
Handling Advice:	Avoid repeated freezing and thawing.
Storage:	4 °C/-20 °C
Storage Comment:	Store undiluted at 2-8 °C for one month or (in aliquots) at -20 °C for longer.



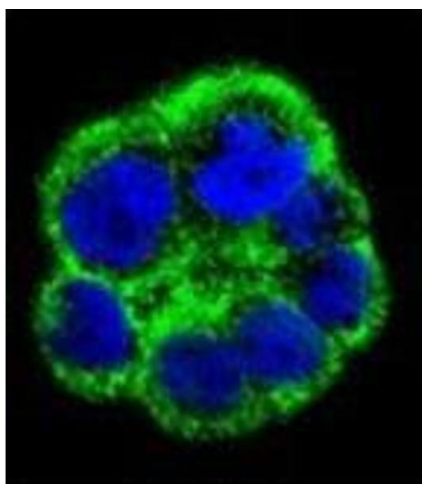
#### Immunohistochemistry (Paraffin-embedded Sections)

**Image 1.** Immunohistochemistry analysis in formalin fixed and paraffin embedded human colon carcinoma reacted with PCYT1A Antibody (N-term) followed by peroxidase conjugation of the secondary antibody and DAB staining.



#### Western Blotting

**Image 2.** Western blot analysis of PCYT1A Antibody (N-term) in K562,MDA-MB453 cell line lysates (35ug/lane). This demonstrates the PCYT1A antibody detected the PCYT1A protein (arrow).



#### Immunofluorescence

**Image 3.** Confocal immunofluorescent analysis of PCYT1A Antibody (N-term) Cat.-No AP53226PU-N with WiDr cell followed by Alexa Fluor 488-conjugated goat anti-rabbit IgG (green). DAPI was used to stain the cell nuclear (blue).